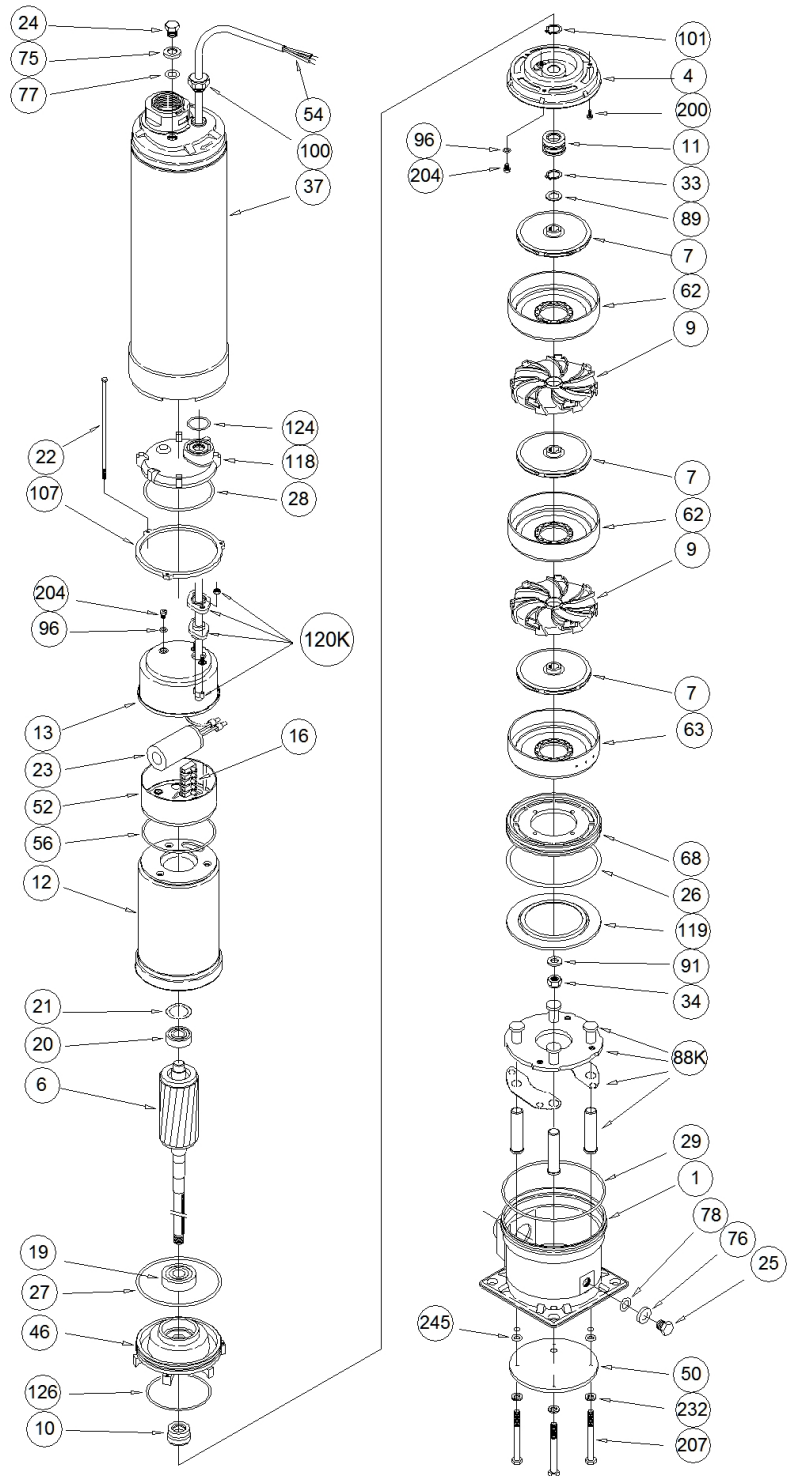


1578060004-MULTIGO 80/12



1578060004-MULTIGO 80/12

Position	Code	Description	Qty
1	251420954	CASING	1
10	360409009	MECHANICAL SEAL	1
101	360600015	SEEGER RING	1
107	371410026	COUPLING RING	1
11	360409006	MECHANICAL SEAL	1
118	240134048	SPACER	1
119	271444020	FLANGE	1
124	360902580	O-RING	1
126	360908214	O-RING	1
13	251402011	MOTOR COVER	1
16	363924204	TERMINAL BOARD	5
19	360316303	BEARING	1
20	360316202	BEARING	1
200	369600031	SCREW	3
204	369640002	BOLT	2
207	369608050	SCREW	4
21	360600035	SPACER RING	1
232	360610001	WASHER	4
24	375192105	PLUG	1
245	360902026	O-RING	4
25	375192105	PLUG	1
26	360951207	O-RING	1
27	360901107	O-RING	1
28	360938850	O-RING	1
29	360902027	O-RING	1
33	360600014	SEEGER RING	1
34	364500080	SHAFT NUT KIT	1
4	251438021	CASING COVER	1
46	240281030	BEARING HOUSING	1
50	341424034	CASING SUPPORT	1
52	372582001	TERMINAL INSULATING BOX	1
54	367900028	CABLE	1
56	360959802	O-RING	1
62	241402181	STAGE HOUSING	3
63	241402166	STAGE HOUSING	1
68	241444021	SPACER	1
75	360676006	WASHER	1
76	360676006	WASHER	1
77	360961395	O-RING	1

1578060004-MULTIGO 80/12

Position	Code	Description	Qty
88K	364500032	RETAINER RING KIT	1
89	360676012	WASHER	1
9	342535042	DIFFUSER	3
91	360676022	WASHER	1
96	360914480	O-RING	2
120K	352665032	KIT CABLE CONNECTOR	1
100	369696010	LOCK SCREW	1
37	258402441	EXTERNAL PUMP CASING	1
12	257902577	MOTOR FRAME	1
22	369393301	TIE ROD	3
6	275412562	SHAFT	1
7	251450732	IMPELLER	4