



**EBARA**

CF3103UJ

# SUBMERSIBLE PUMPS FOR WATER PIT

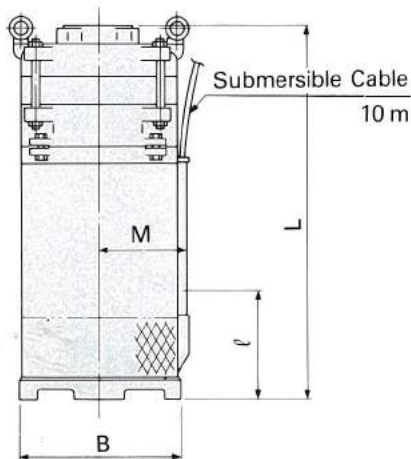
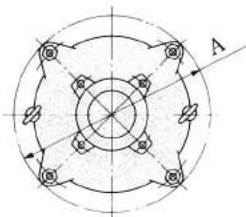
Model **BMS**

Potable water supply  
High efficiency  
Low noise  
Without priming

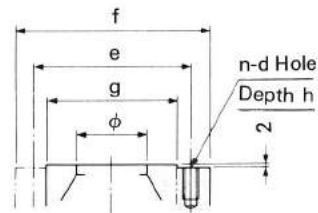




# DIMENSIONS



## Flange



Unit: mm

Size $\phi$	f	e	g	n	d	h
32	135	100	80	4	M12 (M16)	20 (30)
40	140	105	85	4	M12 (M16)	20 (30)
50	155	120	100	4	M12 (M16)	20 (30)
65	175	140	120	4	M12 (M16)	20 (30)
80	185	150	130	8	M12 (M16)	20 (30)
100	210	175	155	8	M12 (M16)	20 (30)

## 50Hz

Unit: mm

Size $\phi$	Model	Motor output kW	Stage	Pump & Motor				Low water level $\ell$	Weight (Mass) kg
				A	B	L	M		
32	32BMS 5.4	0.4	1	290	220	450	132	200	43
	32BMS 5.75	0.75	1	290	220	470	132	200	45
	32BMS 251.5	1.5	2	290	220	610	132	200	61
40	40BMS 5.4	0.4	1	290	220	450	132	200	43
	40BMS 5.75	0.75	1	290	220	470	132	200	45
	40BMS 51.5	1.5	1	290	220	505	132	200	49
	40BMS 252.2	2.2	2	290	220	630	132	200	62
	40BMS 353.7	3.7	3	296	245	760	142	200	86
50	40BMS 555.5	5.5	5	296	245	905	142	200	106
	50BMS 5.75	0.75	1	305	220	475	132	200	49
	50BMS 51.5	1.5	1	305	220	510	132	200	52
	50BMS 52.2	2.2	1	305	220	530	132	200	55
	50BMS 253.7	3.7	2	296	245	710	142	200	80
	50BMS 355.5	5.5	3	296	245	805	142	200	93
	50BMS 457.5	7.5	4	296	245	895	142	200	108
	50BMS 551.1	11	5	330	275	945	280	250	186
	65BMS 51.5	1.5	1	305	220	520	132	200	54
	65BMS 52.2	2.2	1	305	220	540	132	200	57
65	65BMS 53.7	3.7	1	340	245	645	142	200	84
	65BMS 255.5	5.5	2	305	245	775	142	200	95
	65BMS 357.5	7.5	3	305	245	870	142	200	112
	65BMS 451.1	11	4	305	275	925	280	250	191
	65BMS 551.5	15	5	305	275	1020	300	250	200
	80BMS 53.7	3.7	1	305	245	650	142	200	81
80	80BMS 55.5	5.5	1	360	245	695	142	200	94
	80BMS 57.5	7.5	1	360	245	735	142	200	100
	80BMS 251.1	11	2	355	275	865	280	250	183
	80BMS 251.5	15	2	355	275	905	300	250	196
	80BMS 351.5	15	3	355	275	985	300	250	221
	80BMS 3518.5	18.5	3	370	320	1265	320	270	288
	80BMS 452.2	22	4	370	320	1395	350	270	328
	100BMS 51.1	11	1	380	275	760	280	250	163
	100BMS 51.5	15	1	380	275	800	300	250	178
	100	100BMS 518.5	18.5	1	430	320	1150	320	270
100BMS 52.2		22	1	430	320	1200	350	270	290
100BMS 2530		30	2	430	320	1325	420	300	420
100BMS 2537		37	2	430	320	1325	420	300	430
100BMS 2545		45	2	430	320	1525	440	300	455

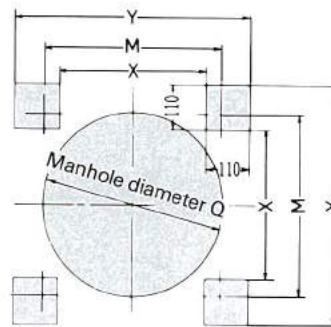
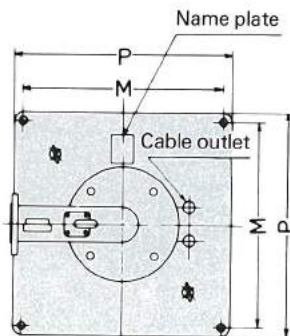
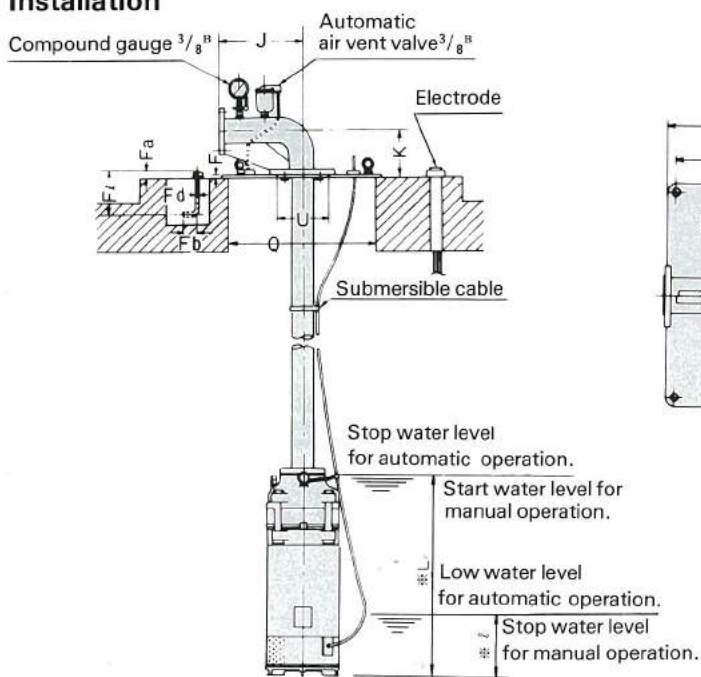
## 60Hz

Unit: mm

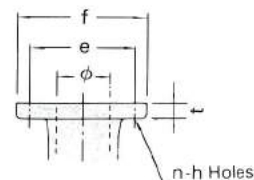
Size $\phi$	Model	Motor output kW	Stage	Pump & Motor				Low water level $\ell$	Weight (Mass) kg
				A	B	L	M		
32	32BMS 6.4	0.4	1	290	220	450	132	200	43
	32BMS 6.75	0.75	1	290	220	470	132	200	45
	32BMS 61.5	1.5	1	290	220	505	132	200	49
	32BMS 362.2	2.2	3	290	220	680	132	200	71
	40BMS 6.4	0.4	1	290	220	450	132	200	43
40	40BMS 6.75	0.75	1	290	220	470	132	200	45
	40BMS 61.5	1.5	1	290	220	505	132	200	49
	40BMS 62.2	2.2	1	290	220	525	132	200	52
	40BMS 263.7	3.7	2	296	245	710	142	200	79
	40BMS 365.5	5.5	3	296	245	805	142	200	92
	40BMS 467.5	7.5	4	296	245	895	142	200	106
	50BMS 6.75	0.75	1	305	220	475	132	200	48
50	50BMS 61.5	1.5	1	305	220	510	132	200	52
	50BMS 62.2	2.2	1	305	220	530	132	200	55
	50BMS 63.7	3.7	1	305	245	600	142	200	71
	50BMS 265.5	5.5	2	296	245	755	142	200	86
	50BMS 367.5	7.5	3	296	245	845	142	200	101
	50BMS 461.1	11	4	330	275	895	280	250	176
	65BMS 61.5	1.5	1	305	220	520	132	200	54
	65BMS 62.2	2.2	1	305	220	540	132	200	56
	65BMS 63.7	3.7	1	305	245	610	142	200	73
	65BMS 65.5	5.5	1	340	245	700	142	200	90
65	65BMS 267.5	7.5	2	305	245	815	142	200	102
	65BMS 261.1	11	2	330	275	815	280	250	165
	65BMS 361.1	11	3	330	275	870	280	250	175
	65BMS 361.5	15	3	330	275	910	300	250	190
	80BMS 63.7	3.7	1	305	245	615	142	200	75
	80BMS 65.5	5.5	1	305	245	695	142	200	86
	80BMS 67.5	7.5	1	305	245	735	142	200	93
	80BMS 61.1	11	1	360	275	745	280	250	150
	80BMS 61.5	15	1	360	275	785	300	250	165
	80BMS 2618.5	18.5	2	370	320	1185	320	270	265
80	80BMS 262.2	22	2	370	320	1235	350	270	290
	80BMS 3630	30	3	370	320	1450	420	300	405
	100BMS 61.1	11	1	380	275	760	280	250	164
	100BMS 61.5	15	1	380	275	800	300	250	179
	100BMS 618.5	18.5	1	380	320	1095	320	270	245
	100BMS 62.2	22	1	380	320	1145	350	270	270
	100BMS 630	30	1	430	320	1335	420	300	384
	100BMS 637	37	1	430	320	1335	420	300	394
	100BMS 2645	45	2	430	320	1525	440	300	455

# DIMENSIONS

## Installation



## Flange



Unit: mm

Size $\phi$	f	e	t	n	h
32	135	100	16	4	15(19)
40	140	105	16	4	15(19)
50	155	120	16	4	15(19)
65	175	140	18	4	15(19)
80	185	150	18	8	15(19)
100	210	175	18	8	15(19)

※ As to length L and  $l$ , refer to pump dimensions

Unit: mm

Model	Foundation									Anchor bolt				Weight (Mass) kg
	F	K	J	M	P	U	X	Y	Q	Fd	F $\phi$	Fa	Fd	
32BMS	12	130	230	400	450	160	340	560	400	M12	160	32	50	24
40BMS	12	140	230	400	450	160	340	560	400	M12	160	32	50	24
50BMS	12	155	280	500	550	200	440	660	500	M12	160	32	50	36
65BMS	12	165	280	500	550	200	440	660	500	M12	160	32	50	36
80BMS	16	190	330	600	650	235	540	760	600	M16	200	39	63	63
100BMS	16	230	330	600	650	235	540	760	600	M16	200	39	63	64

\* All specifications subject to change without notice.  
In this catalog, the particulars in [ ] are in accordance with the International System of Units (SI) and given for reference only.



## EBARA CORPORATION

Head Office  
International Division  
Scotland Office  
Beijing Office  
Bangkok Office  
Jakarta Office  
Manila Office  
Seoul Office  
Taipei Office  
Singapore Office

Phone:03-3743-6111  
Phone:03-3289-6111  
Phone:44-1506-460-232  
Phone:86-10-501-7541  
Phone:66-2-216-4935/4936  
Phone:62-21-4205522  
Phone: 63-2-816-7524  
Phone:82-2-538-7031  
Phone:886-2-567-1310  
Phone:65-862-3536

Distributed by