

Model **DL**
Manual

Model **DLA**
Automatic

Model **DLJ**
Parallel
Alternating

■ Features

- Non-clog operation
Non-clog semi-open impeller prevents clogging by fibrous matter.
- Large range of models
Models up to 300mm discharge size and 22 kW available.
- Robust construction
Rugged cast iron construction, all fasteners of stainless steel and a 4 pole motor.
- Double mechanical seal in oil chamber
An oil lubricated double mechanical seal with lower faces of hard silicon carbide provides strong and reliable shaft sealing
- In built motor protection
Quick acting dual response overloads provides protection against overload, lock or open phase for sizes up to 7.5 kW. Models 11 kW and above have miniature thermal protectors.
- Automatic operation
All models up to 1.5 kW are available as automatic (A' type) or parallel alternating (J' type) pumps with inbuilt controls and float switches. No need for separate control panels, simply connect to power source.

■ Applications

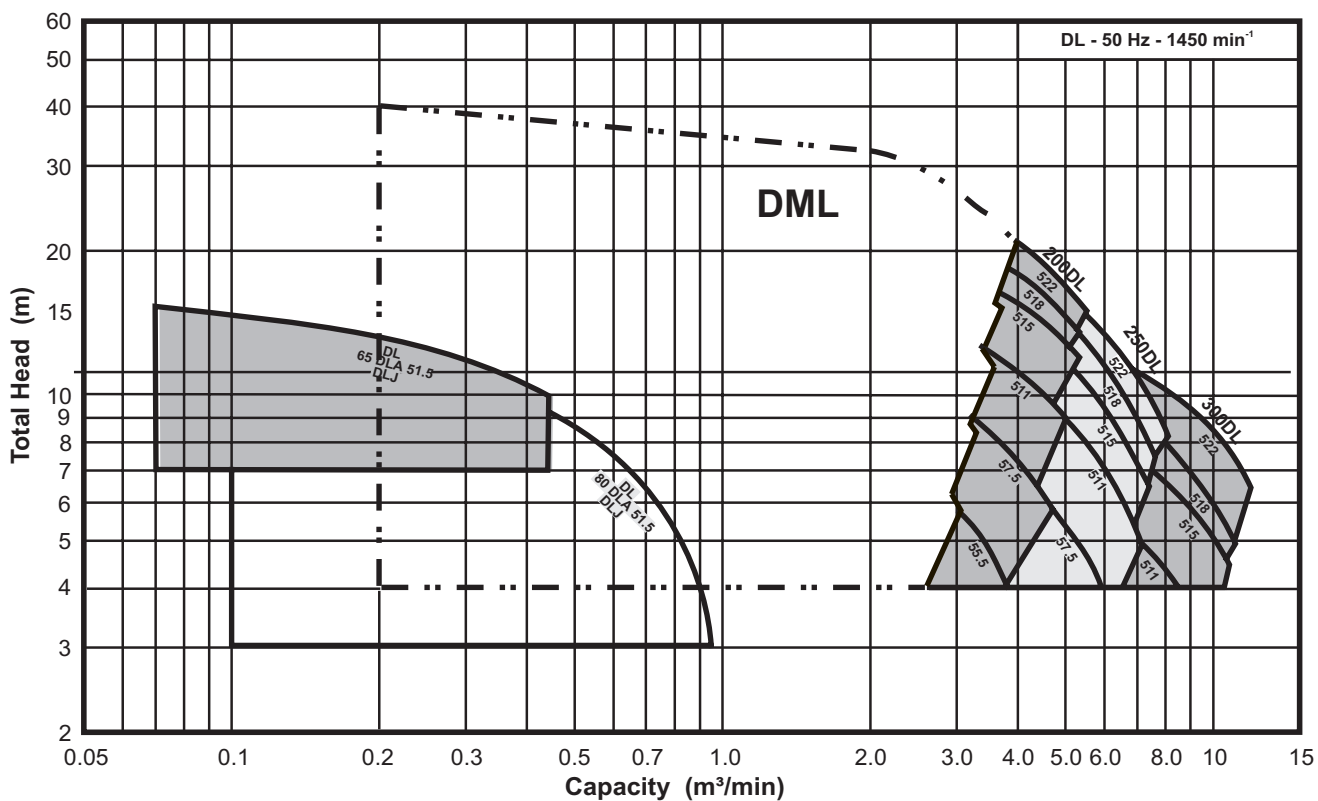
- Sewage
- Waste water
- Storm water drainage

Specifications

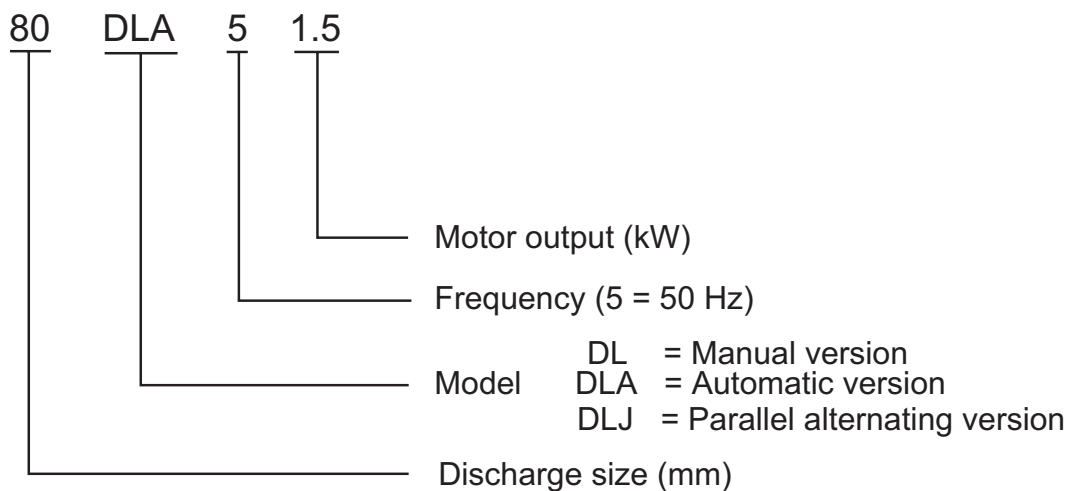
50Hz

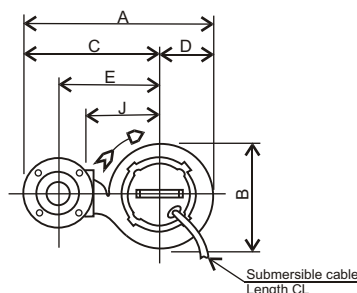
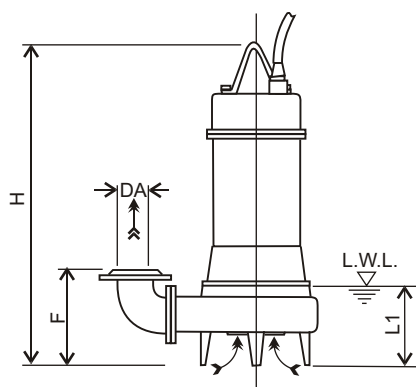
		Standard	Optional
Scope	Discharge	65, 80, 200 – 300 mm	
	Motor Power	1.5, 5.5 – 22 kW (3phase)	
	Performance	Capacity : 0.07 – 12 m ³ /min Head : 3 – 39 m.	
Liquid	Type	Sewage	
	Maximum temperature	40° C (Manual and A Type) 32° C (J' Type)	
	Max. solids	refer to table below	
Submergence	Maximum	8 m	
	Minimum	Refer to low water level (L.W.L.) in dimensions.	
Construction	Impeller	Non-clog semi-open	
	Mechanical Seal	Oil lubricated, double mechanical seal (single spring 1.5 kW) (tandem spring 5.5 to 22 kW)	
Materials	Casing	Cast Iron	
	Impeller	Cast Iron	
	Suction Cover	Cast Iron	
	Shaft	403 Stainless Steel	
	Motor Frame	Cast Iron	
	Fasteners	304 Stainless Steel	
	Mechanical Seal	Upper Faces : Carbon / Ceramic Lower Faces : Silicon Carbide / Silicon Carbide Lubricating Oil: Turbine Oil VG32 (SAE10W/20W)	
Motor	Type	Air filled dry submersible, IP68, Class F insulation	
	Nominal Speed	4 pole 1450 rpm	
	Applicable Voltages	380/400/415 volts 3 phase 50 Hz	
	Starting	DOL (up to 7.5 kW) Star-Delta (11 to 22 kW)	
	Protection	In built overload protection (up to 7.5 kW) Miniature thermal protector (11 to 22 kW)	
	Bearings	Pre lubricated sealed ball bearings	
Cable	Length	10m	
Accessories	Flange	Discharge elbow with screwed companion flange	
			Quick Discharge Connector (QDC)

Solids Handling						
Model	- discharge	65 Ø	80 Ø	200 Ø	250 Ø	300 Ø
	- motor kW	1.5	1.5	All	All	All
Max. Diameter of Solids		40 mm	46 mm	75~76 mm	79 mm	88 mm
Max. Length of Fibers		195 mm	240 mm	500 mm	550 mm	600 mm



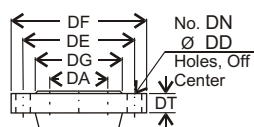
Model code





Note:
 1/. L.W.L (Low Water Level) Is limited to 10 minutes operation at low water level.
 2/. Is limited to 30 minutes operation with water level below top of motor.

Discharge Flange Dimensions (JIS 10kgf/cm²)



DA	DE	DF	DG	DT	DN	DD
65	150	175	116	18	4	15
80	150	185	126	18	4	15
200	290	330	262	26	12	23
250	355	400	324	30	12	25
300	400	445	368	32	16	25

Size DA	Model	Output KW	A	B	C	D	E	F	H	J	L1	CL	Weight
65	65 DL 51.5	1.5	497	291	353	144	265	200	576	200	140	10 m	52 kg
80	80 DL 51.5	1.5	524	292	378	146	285	220	597	210	165	10 m	55 kg
200	200 DL 55.5	5.5	832	430	615	217	450	414	826	300	285	10 m	160 kg
	200 DL 57.5	7.5	863	453	635	228	470	410	809	320	285	10 m	176 kg
	200 DL 511	11	863	453	635	228	470	410	908	320	285	10 m	212 kg
	200 DL 515	15	896	479	655	241	490	411	995	340	285	10 m	260 kg
	200 DL 518	18.5	932	512	675	257	510	415	1001	360	285	10 m	305 kg
	200 DL 522	22	932	512	675	257	510	415	1001	360	285	10 m	330 kg
250	250 DL 57.5	7.5	969	525	700	269	500	622	904	370	400	10 m	260 kg
	250 DL 511	11	993	541	720	273	520	634	1000	390	400	10 m	320 kg
	250 DL 515	15	1007	549	730	277	530	646	1086	400	400	10 m	380 kg
	250 DL 518	18.5	1007	549	730	277	530	646	1089	400	400	10 m	420 kg
	250 DL 522	22	1007	549	730	277	530	646	1089	400	400	10 m	440 kg
300	300 DL 511	11	1100	588	798	302	575	671	1050	420	450	10 m	365 kg
	300 DL 515	15	1100	588	798	302	575	671	1131	420	450	10 m	395 kg
	300 DL 518	18.5	1135	618	818	317	595	668	1131	440	450	10 m	440 kg
	300 DL 522	22	1135	618	818	317	595	668	1131	440	450	10 m	465 kg

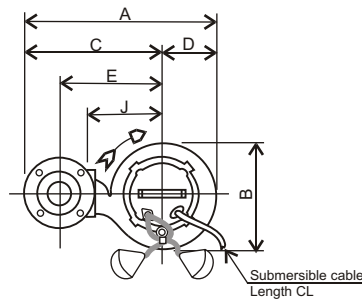
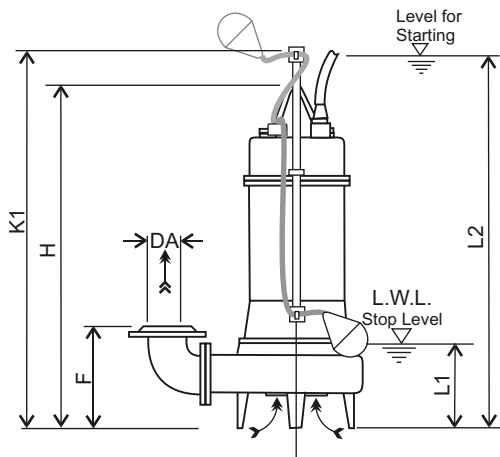
Units: mm unless otherwise specified

Ebara Submersible Sewage Pumps

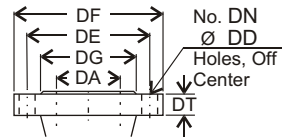
Model **DL**

Dimensions - Automatic Models - DLA

50Hz



Discharge Flange Dimensions
(JIS 10kgf/cm²)



- Note:
- 1/. L.W.L (Low Water Level) Is limited to 10 minutes operation at low water level.
 - 2/. Is limited to 30 minutes operation with water level below top of motor.

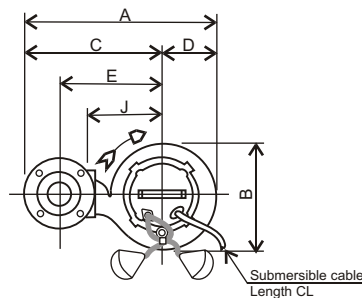
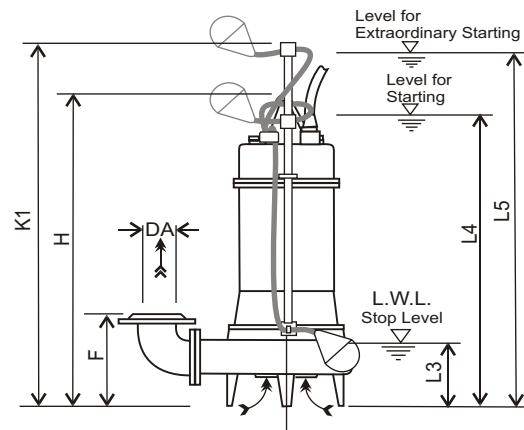
DA	DE	DF	DG	DT	DN	DD
65	150	175	116	18	4	15
80	150	185	126	18	8	15

Size DA	Model	Output KW	A	B	C	D	E	F	H	J	K1	L1	L2	CL	Weight
65	65 DLA 51.5	1.5	497	291	353	144	265	200	662	200	840	320	860	10 m	55 kg
80	80 DLA 51.5	1.5	524	292	378	146	285	220	683	210	840	320	860	10 m	58 kg

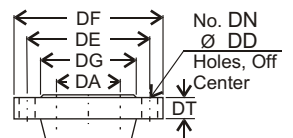
Units: mm unless otherwise specified

Dimensions - Parallel Alternating Models - DLJ

50Hz



Discharge Flange Dimensions
(JIS 10kgf/cm²)



- Note:
- 1/. L.W.L (Low Water Level) Is limited to 10 minutes operation at low water level.
 - 2/. Is limited to 30 minutes operation with water level below top of motor.

DA	DE	DF	DG	DT	DN	DD
65	150	175	116	18	4	15
80	150	185	126	18	8	15

Size DA	Model	Output KW	A	B	C	D	E	F	H	J	K1	L3	L4	L5	CL	Weight
65	65 DLJ 51.5	1.5	497	291	353	144	265	200	662	200	950	290	780	970	10 m	55 kg
80	80 DLJ 51.5	1.5	524	292	378	146	285	220	683	210	950	290	780	970	10 m	58 kg

Units: mm unless otherwise specified

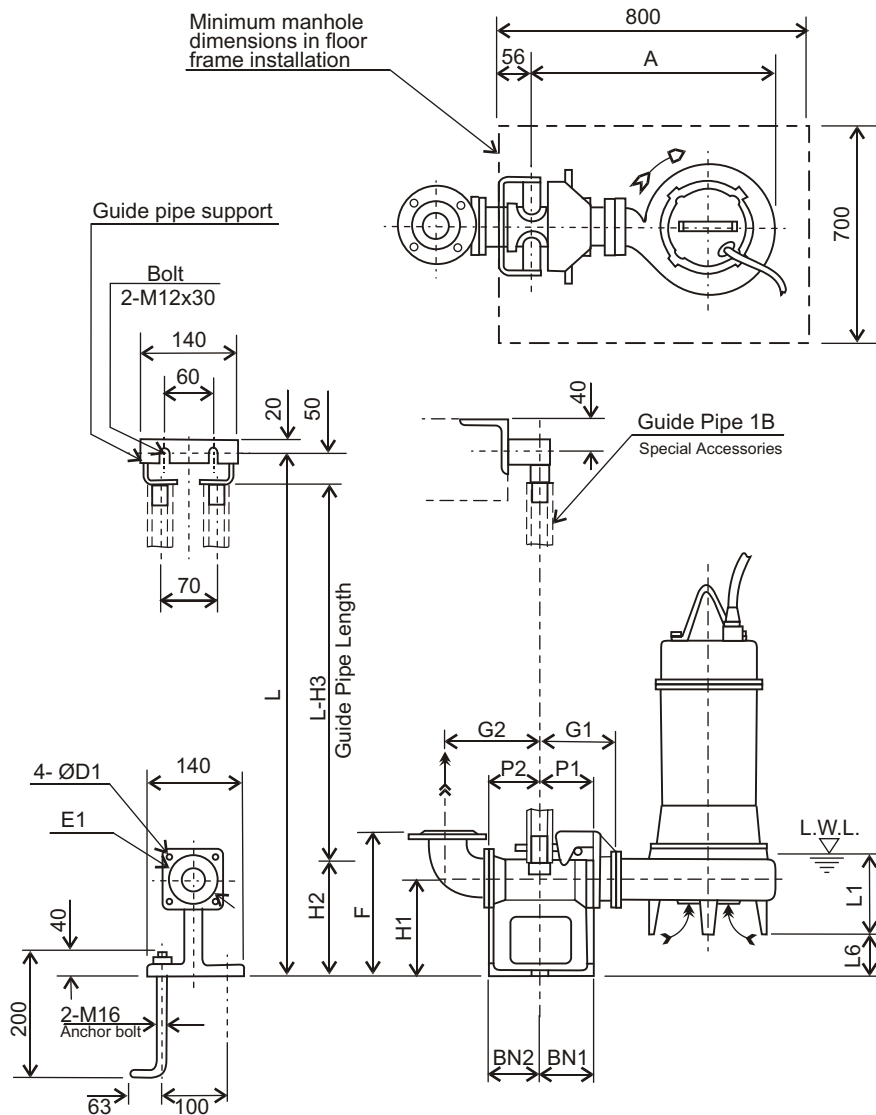
Ebara Submersible Sewage Pumps

Model **DL**

Dimensions with QDC

Pump **DL** QDC **LM**

Applicable Models - 65 & 80 DL



Note:

1/. For detailed dimensions of the pumps, refer to separate dimension data sheets.

2/. The discharge bend and companion flange supplied with the pump are used with the QDC.

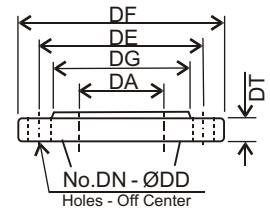
3/. The weight in dimension tables refers only to the weight of the QDC.

4/. Standard accessories supplied with QDC include:-

- Connector body with foundation bolts.
- Guide pipe support
- Sliding Glide
- Adaptor Flange

Guide Pipe is not supplied.

Discharge Flange
(JIS 10kgf/cm²)



DA	DE	DF	DG	DT	DN	DD
65	140	175	116	18	4	15
80	150	185	126	18	8	15

Pump Model	A	P1	P2	G1	G2	F	H1	H2	H3	L1	L6	BN1	BN2	D1	E1	QDC Model	Weight
65 DL 51.5	464	75	95	120	160	250	145	190	240	140	50	75	95	12	140	LM65	14 kg
80 DL 51.5	481	75	90	125	165	285	175	230	280	165	65	75	90	15	155	LM80	17 kg

Units: mm unless otherwise specified

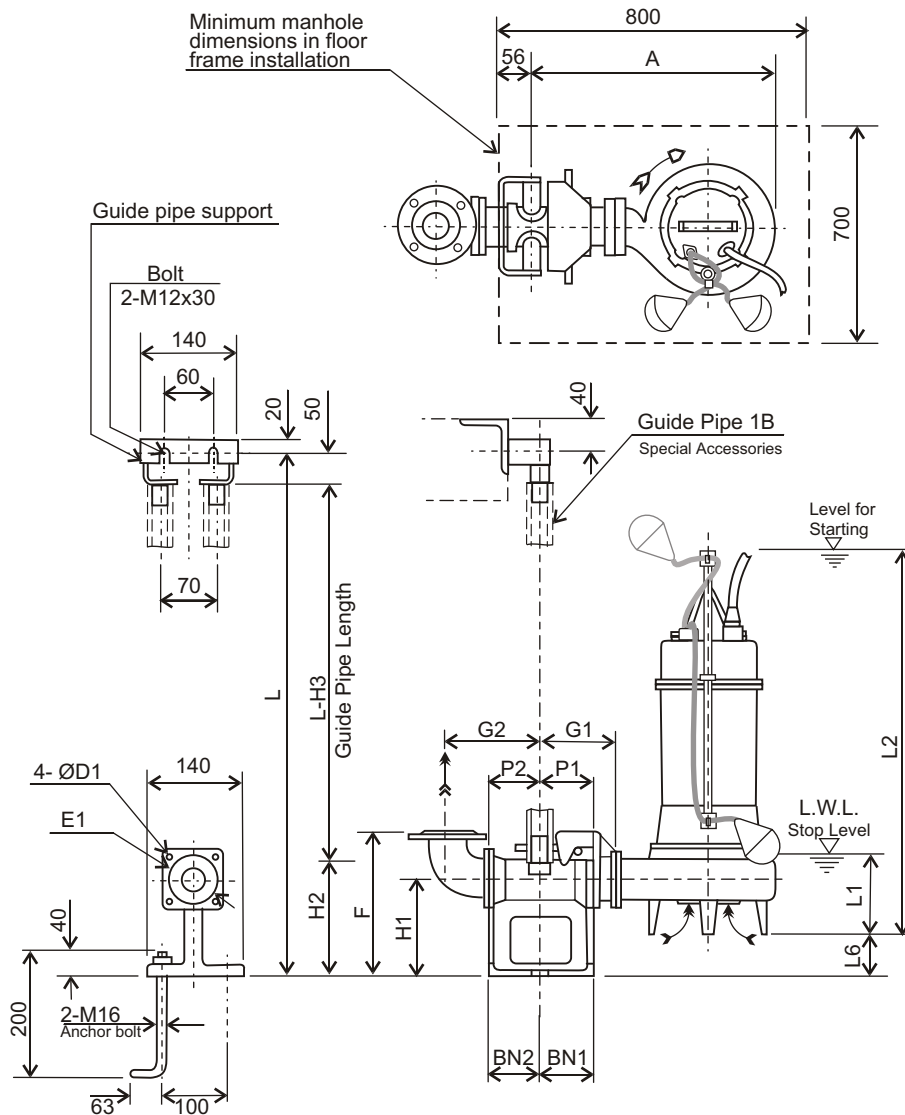
Ebara Submersible Sewage Pumps

Model **DL**

Dimensions with QDC

Pump **DLA** QDC **LM**

Applicable Models - 65 & 80 DLA



Note:

1/. For detailed dimensions of the pumps, refer to separate dimension data sheets.

2/. The discharge bend and companion flange supplied with the pump are used with the QDC.

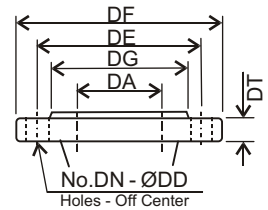
3/. The weight in dimension tables refers only to the weight of the QDC.

4/. Standard accessories supplied with QDC include:-

- Connector body with foundation bolts.
- Guide pipe support
- Sliding Glide
- Adaptor Flange

Guide Pipe is not supplied.

Discharge Flange
(JIS 10kgf/cm²)



DA	DE	DF	DG	DT	DN	DD
65	140	175	116	18	4	15
80	150	185	126	18	8	15

Pump Model	A	P1	P2	G1	G2	F	H1	H2	H3	L1	L2	L6	BN1	BN2	D1	E1	QDC Model	Weight
65 DLA 51.5	464	75	95	120	160	250	145	190	240	320	860	50	75	95	12	140	LM65	14 kg
80 DLA 51.5	481	75	90	125	165	285	175	230	280	320	860	65	75	90	15	155	LM80	17 kg

Units: mm unless otherwise specified

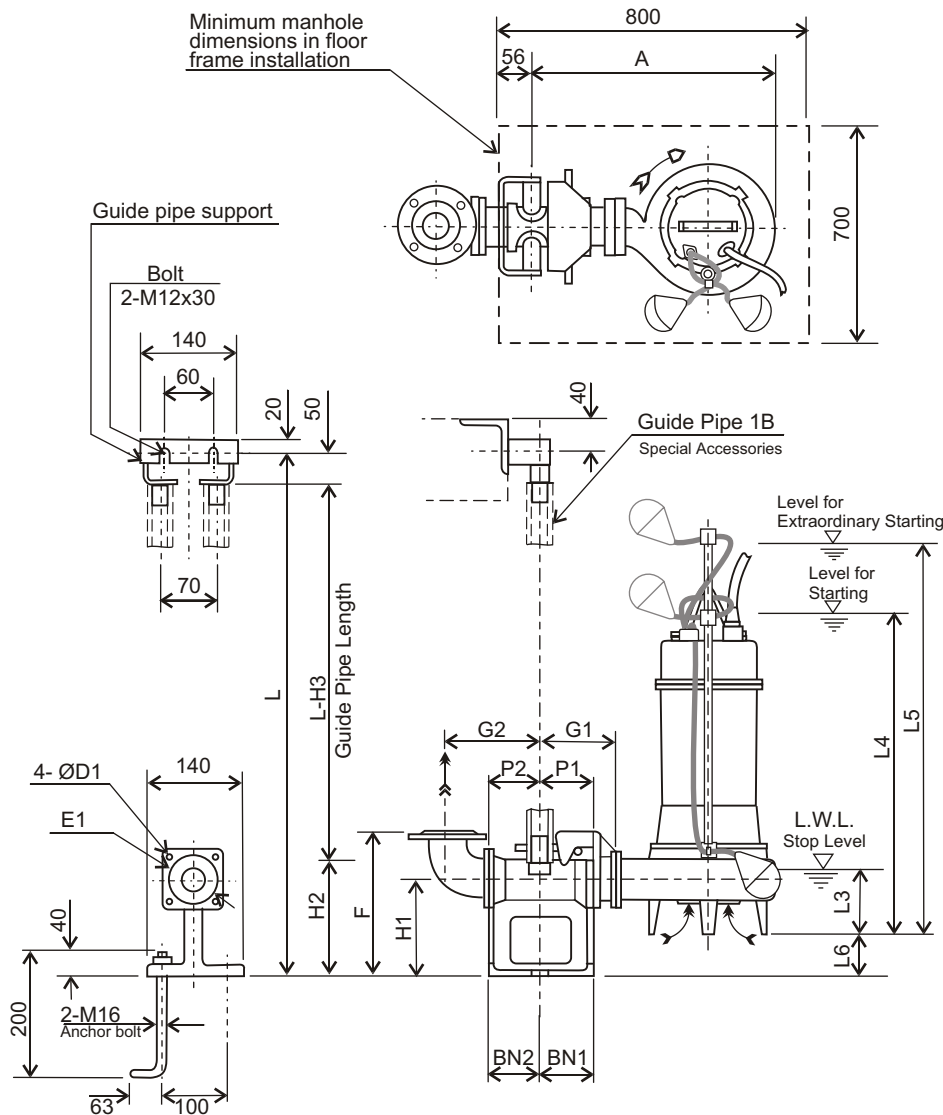
Ebara Submersible Sewage Pumps

Model **DL**

Dimensions with QDC

Pump **DLJ** QDC **LM**

Applicable Models - 65 & 80 DLJ



Note:

1/. For detailed dimensions of the pumps, refer to separate dimension data sheets.

2/. The discharge bend and companion flange supplied with the pump are used with the QDC.

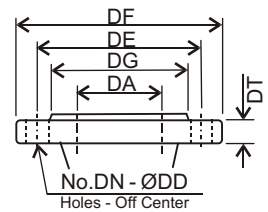
3/. The weight in dimension tables refers only to the weight of the QDC.

4/. Standard accessories supplied with QDC include:-

- Connector body with foundation bolts.
- Guide pipe support
- Sliding Glide
- Adaptor Flange

Guide Pipe is not supplied.

Discharge Flange
(JIS 10kgf/cm²)



DA	DE	DF	DG	DT	DN	DD
65	140	175	116	18	4	15
80	150	185	126	18	8	15

Pump Model	A	P1	P2	G1	G2	F	H1	H2	H3	L3	L4	L5	L6	BN1	BN2	D1	E1	QDC Model	Weight
65 DLJ 51.5	464	75	95	120	160	250	145	190	240	290	780	970	50	75	95	12	140	LM65	14 kg
80 DLJ 51.5	481	75	90	125	165	285	175	230	280	290	780	970	65	75	90	15	155	LM80	17 kg

Units: mm unless otherwise specified

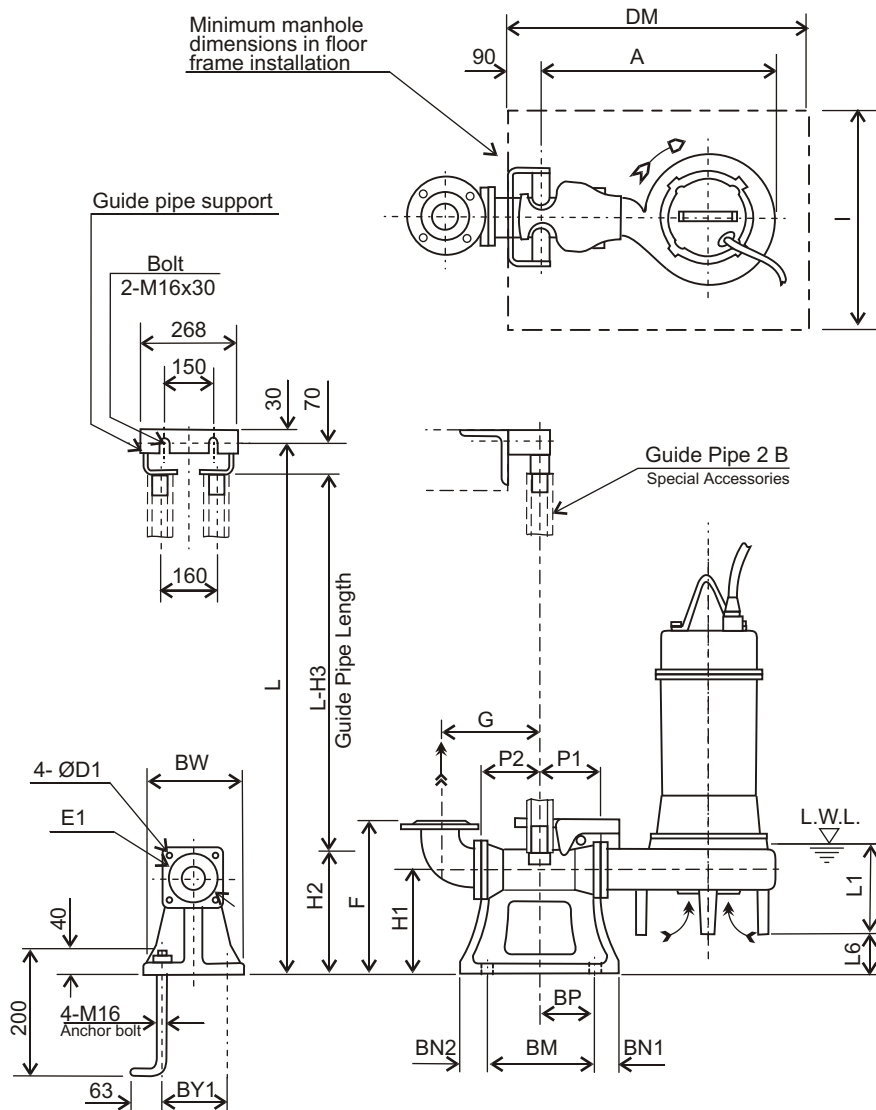
Ebara Submersible Sewage Pumps

Model **DL**

Dimensions with QDC

Pump **DL** QDC **LL**

Applicable Models - 200 DL



Note:

1/. For detailed dimensions of the pumps, refer to separate dimension data sheets.

2/. The discharge bend and companion flange supplied with the pump are used with the QDC.

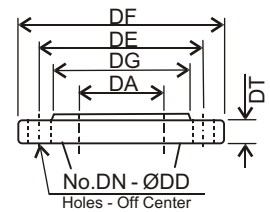
3/. The weight in dimension tables refers only to the weight of the QDC.

4/. Standard accessories supplied with QDC include:-

- Connector body with foundation bolts.
- Guide pipe support
- Sliding Glide

Guide Pipe is not supplied.

Discharge Flange
(JIS 10kgf/cm²)



DA	DE	DF	DG	DT	DN	DD
200	290	330	262	26	12	23

Pump Model	A	P1	P2	G	F	H1	H2	H3	L1	L6	BN1	BN2	BM	BP	BY1	BW	DM	I	D1	E1	QDC Model	Weight
200 DL 55.5	672	155	205	355	495	320	405	475	285	81	60	60	390	170	300	350	1100	800	16	250	LL150	80 kg
200 DL 57.5	703	155	205	355	495	320	405	475	285	85	60	60	390	170	300	350	1100	800	16	250	LL150	80 kg
200 DL 511	703	155	205	355	495	320	405	475	285	85	60	60	390	170	300	350	1100	800	16	250	LL150	80 kg
200 DL 515	736	155	205	355	495	320	405	475	285	84	60	60	390	170	300	350	1100	800	16	250	LL150	80 kg
200 DL 518	772	155	205	355	495	320	405	475	285	80	60	60	390	170	300	350	1100	800	16	250	LL150	80 kg
200 DL 522	772	155	205	355	495	320	405	475	285	80	60	60	390	170	300	350	1100	800	16	250	LL150	80 kg

Units: mm unless otherwise specified

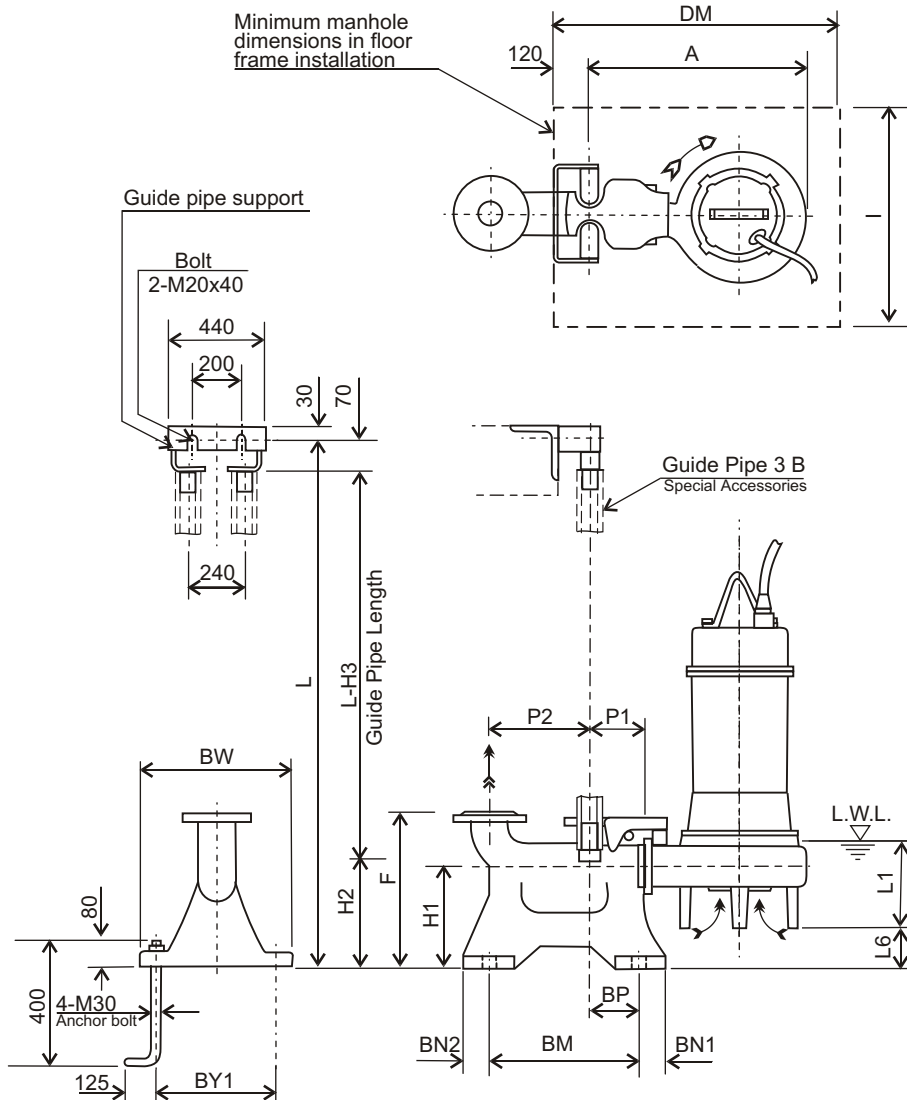
Ebara Submersible Sewage Pumps

Model **DL**

Dimensions with QDC

Pump **DL** QDC **LL**

Applicable Models - 250 & 300 DL



Note:

1/. For detailed dimensions of the pumps, refer to separate dimension data sheets.

2/. The discharge bend and companion flange supplied with the pump are used with the QDC.

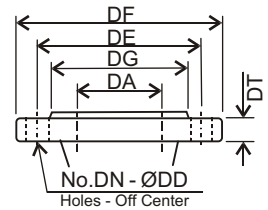
3/. The weight in dimension tables refers only to the weight of the QDC.

4/. Standard accessories supplied with QDC include:-

- Connector body with foundation bolts.
- Guide pipe support
- Sliding Glide

Guide Pipe is not supplied.

Discharge Flange
(JIS 10kgf/cm²)



DA	DE	DF	DG	DT	DN	DD
250	355	400	324	30	12	25
300	400	445	368	32	16	25

Pump Model	A	P1	P2	F	H1	H2	H3	L1	L6	BN1	BN2	BM	BP	BY1	BW	DM	I	QDC Model	Weight
250 DL 57.5	834	195	435	700	350	440	510	400	58	70	70	650	215	500	560	1200	900	LL250	150 kg
250 DL 511	858	195	435	700	350	440	510	400	46	70	70	650	215	500	560	1200	900	LL250	150 kg
250 DL 515	872	195	435	700	350	440	510	400	34	70	70	650	215	500	560	1200	900	LL250	150 kg
250 DL 518	872	195	435	700	350	440	510	400	34	70	70	650	215	500	560	1200	900	LL250	150 kg
250 DL 522	872	195	435	700	350	440	510	400	34	70	70	650	215	500	560	1200	900	LL250	150 kg
300 DL 511	917	195	465	800	430	550	620	450	109	70	70	680	215	580	640	1200	900	LL300	200 kg
300 DL 515	917	195	465	800	430	550	620	450	109	70	70	680	215	580	640	1200	900	LL300	200 kg
300 DL 518	952	195	465	800	430	550	620	450	112	70	70	680	215	580	640	1200	900	LL300	200 kg
300 DL 522	952	195	465	800	430	550	620	450	112	70	70	680	215	580	640	1200	900	LL300	200 kg

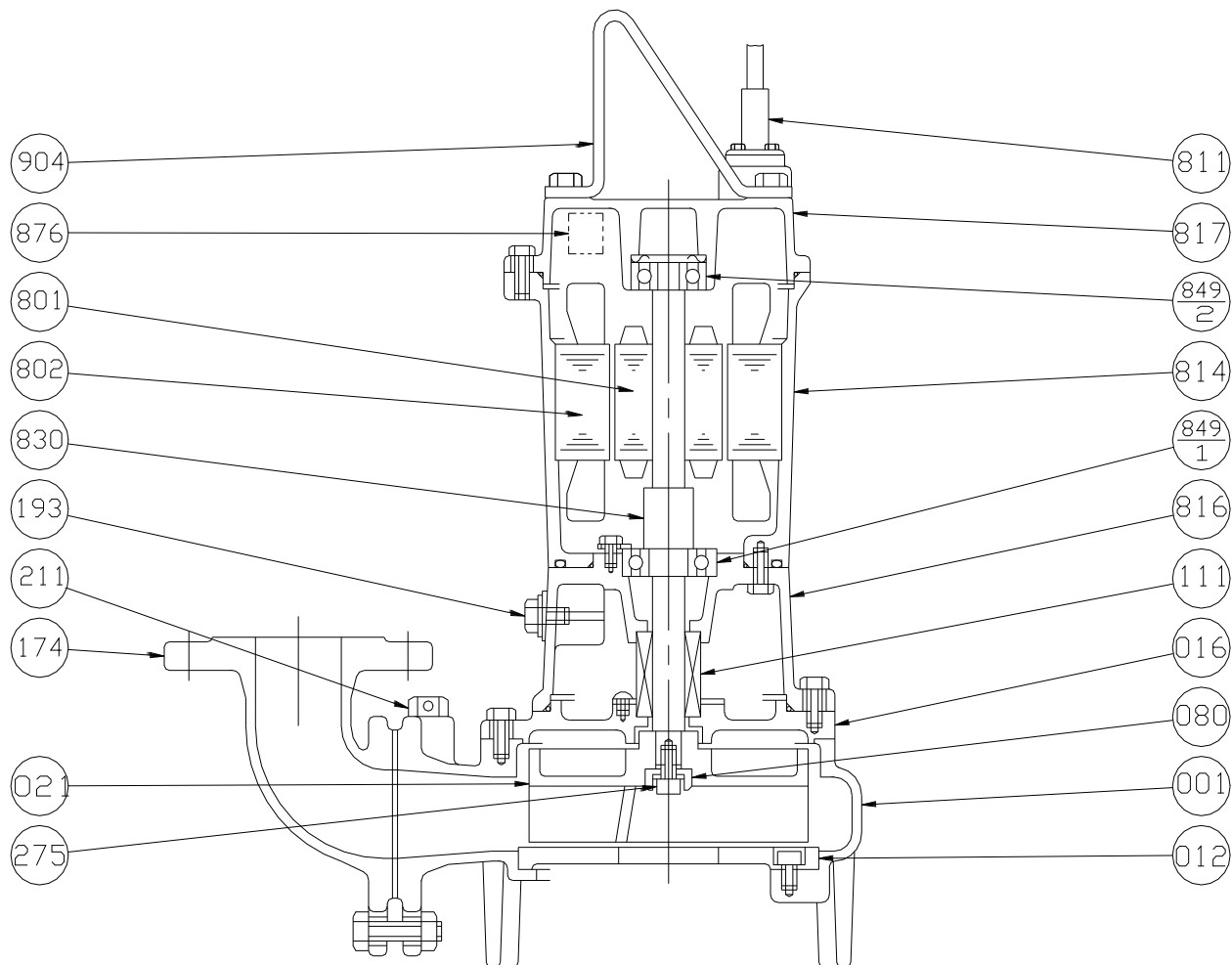
Units: mm unless otherwise specified

Ebara Submersible Sewage Pumps

Model **DL**

Sectional View - 65(80) DL 51.5

50Hz

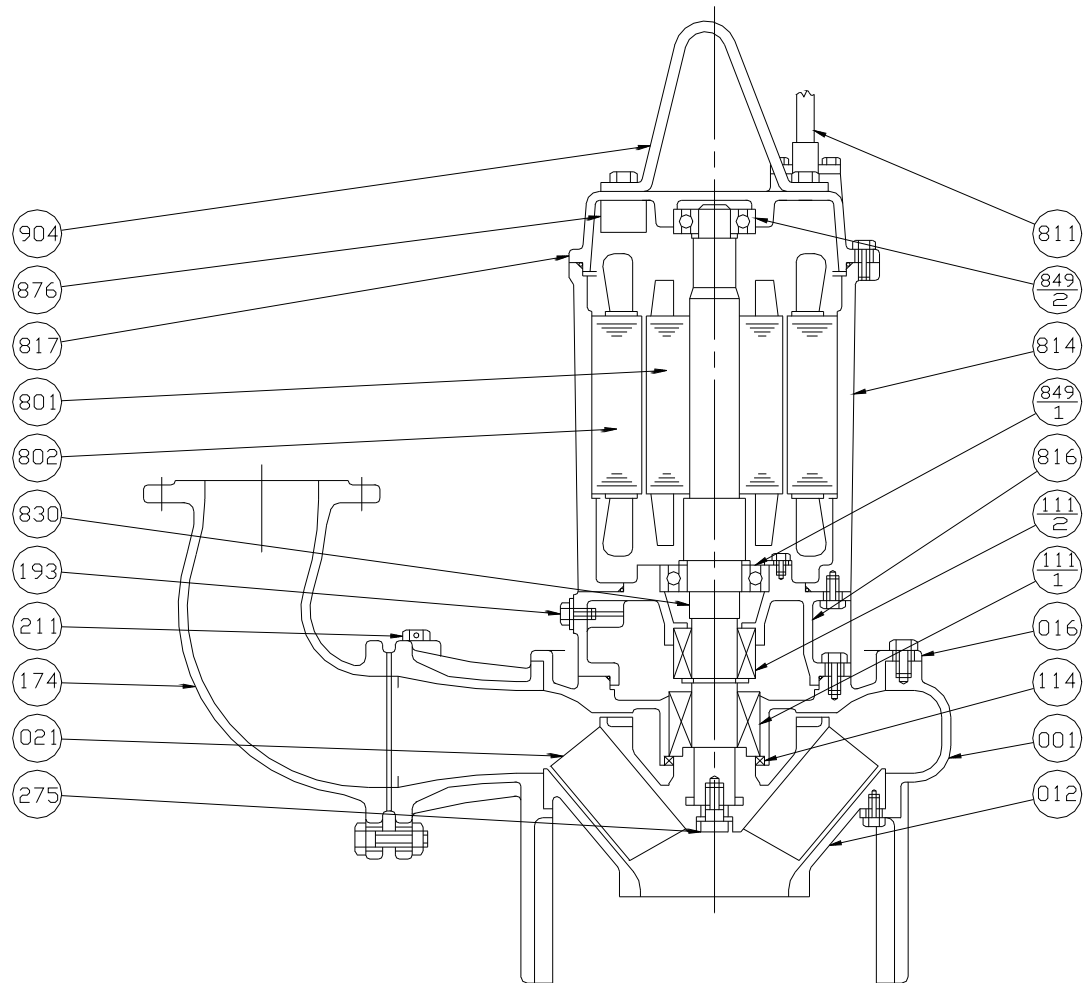


Item Number	Description	Material	Quantity per unit
001	Pump Casing	FC200 Cast iron	1
012	Suction Cover	FC200 Cast Iron	1
016	Mechanical Seal Cover	FC200 Cast iron	1
021	Impeller	FC200 Cast iron	1
080	Bushing	SS Steel	1
111	Mechanical Seal		1
174	Discharge Bend	FC200 Cast iron	1
193	Oil Plug	C3604 or SUS304 Brass or 304 Stainless Steel	1
211	Airvent Valve	C3604 Brass	1
275	Impeller Bolt	SUS304 Stainless Steel	1

Item Number	Description	Material	Quantity per unit
801	Rotor		1
802	Stator		1
811	Submersible Cable		1
814	Motor Frame	FC150 Cast Iron	1
816	Power Side Bracket	FC150 Cast Iron	1
817	Opposite Side Bracket	FC150 Cast Iron	1
830	Shaft	SUS403 Stainless Steel	1
849-1	Ball Bearing		1
849-2	Ball Bearing		1
876	Protector		1
904	Lifting Hanger	SS Steel	1

Sectional View - 200 DL 55.5, 57.5

50Hz

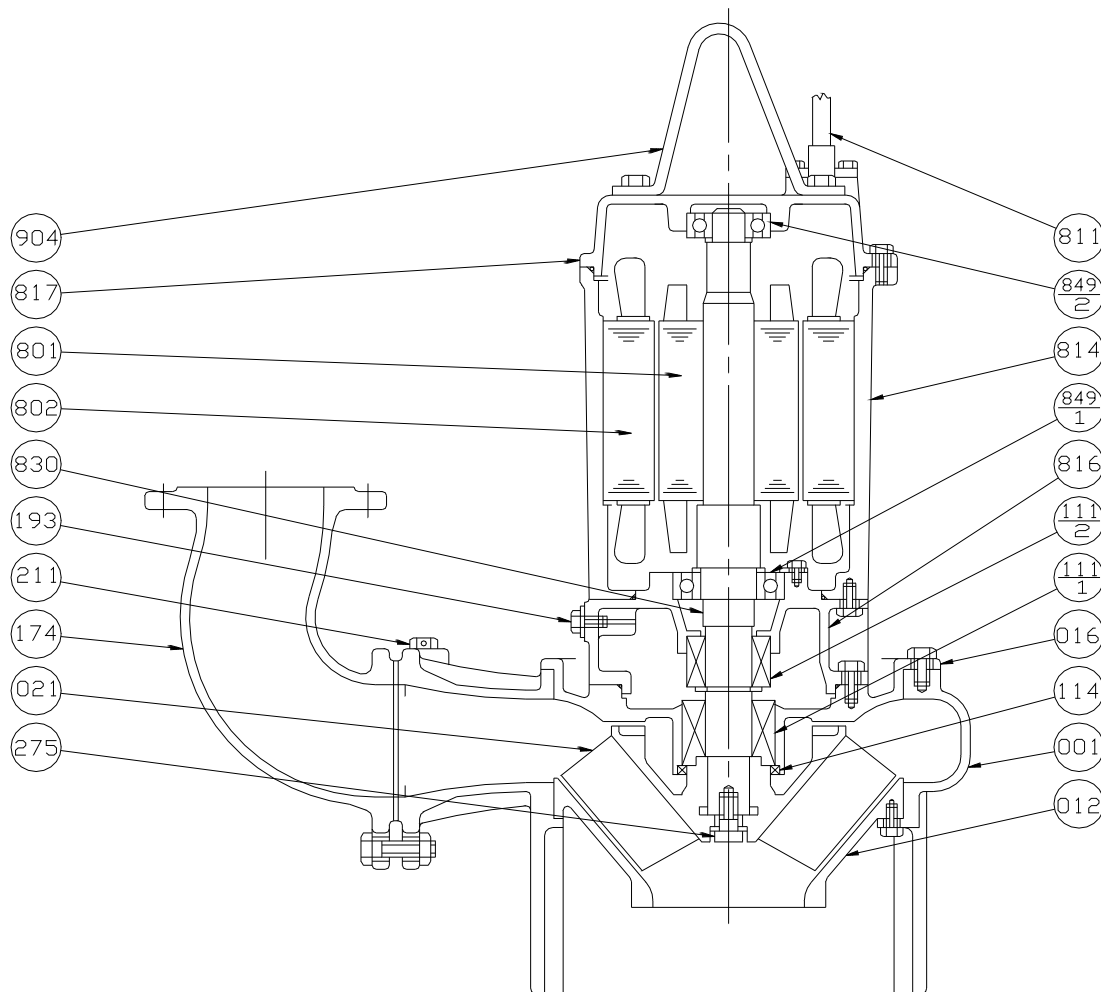


Item Number	Description	Material	Quantity per unit
001	Pump Casing	FC200 Cast iron	1
012	Suction Cover	FC200 Cast Iron	1
016	Mechanical Seal Cover	FC200 Cast iron	1
021	Impeller	FC200 Cast iron	1
111-1	Mechanical Seal		1
111-2	Mechanical Seal		1
114	Oil Seal	NBR Rubber	1
174	Discharge Bend	FC200 Cast iron	1
193	Oil Plug	C3604 or SUS304 Brass or 304 Stainless Steel	1
211	Airvent Valve	C3604 Brass	1
275	Impeller Bolt	SUS304 Stainless Steel	1

Item Number	Description	Material	Quantity per unit
801	Rotor		1
802	Stator		1
811	Submersible Cable		1
814	Motor Frame	FC150 Cast Iron	1
816	Power Side Bracket	FC150 Cast Iron	1
817	Opposite Side Bracket	FC150 Cast Iron	1
830	Shaft	SUS403 Stainless Steel	1
849-1	Ball Bearing		1
849-2	Ball Bearing		1
876	Protector		1
904	Lifting Hanger	SS Steel	1

Sectional View - 200 DL 511, 515

50Hz

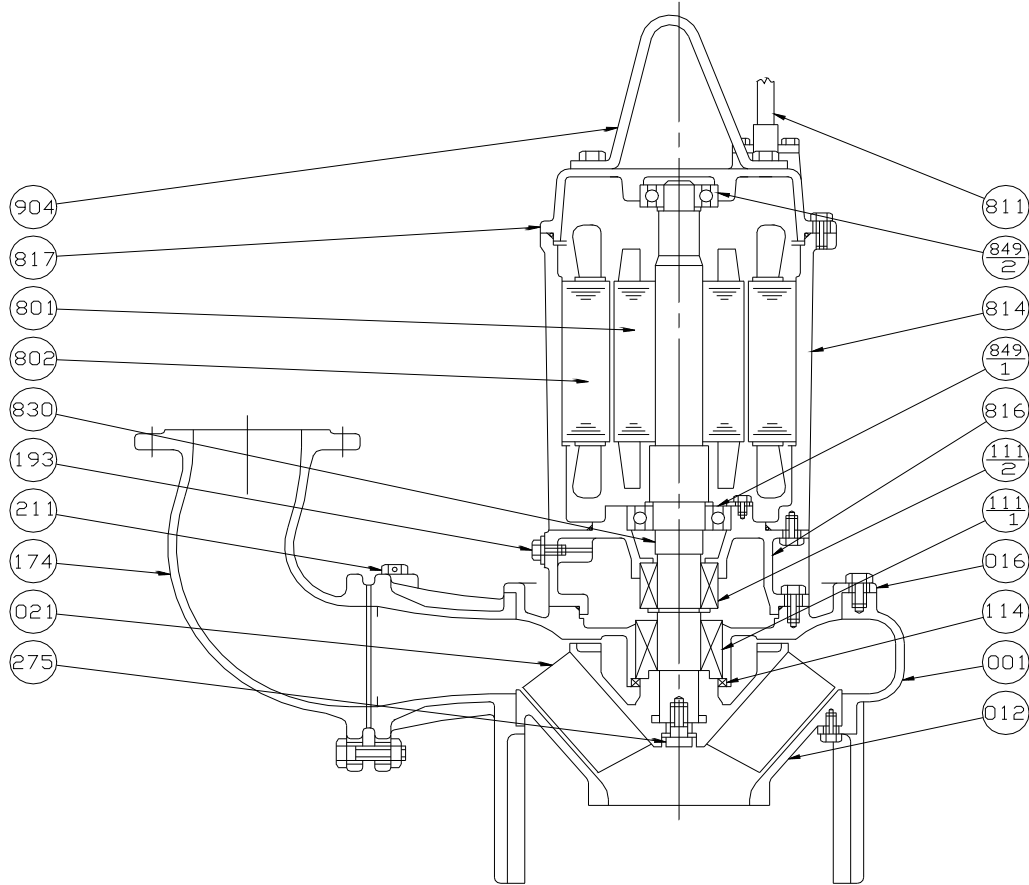


Item Number	Description	Material	Quantity per unit
001	Pump Casing	FC200 Cast iron	1
012	Suction Cover	FC200 Cast Iron	1
016	Mechanical Seal Cover	FC200 Cast iron	1
021	Impeller	FC200 Cast iron	1
111-1	Mechanical Seal		1
111-2	Mechanical Seal		1
114	Oil Seal	NBR Rubber	1
174	Discharge Bend	FC200 Cast iron	1
193	Oil Plug	C3604 or SUS304 Brass or 304 Stainless Steel	1
211	Airvent Valve	C3604 Brass	1
275	Impeller Bolt	SUS304 Stainless Steel	1

Item Number	Description	Material	Quantity per unit
801	Rotor		1
802	Stator		1
811	Submersible Cable		1
814	Motor Frame	FC150 Cast Iron	1
816	Power Side Bracket	FC150 Cast Iron	1
817	Opposite Side Bracket	FC150 Cast Iron	1
830	Shaft	SUS403 Stainless Steel	1
849-1	Ball Bearing		1
849-2	Ball Bearing		1
904	Lifting Hanger	SS Steel	1

Sectional View - 200 DL 518, 522

50Hz

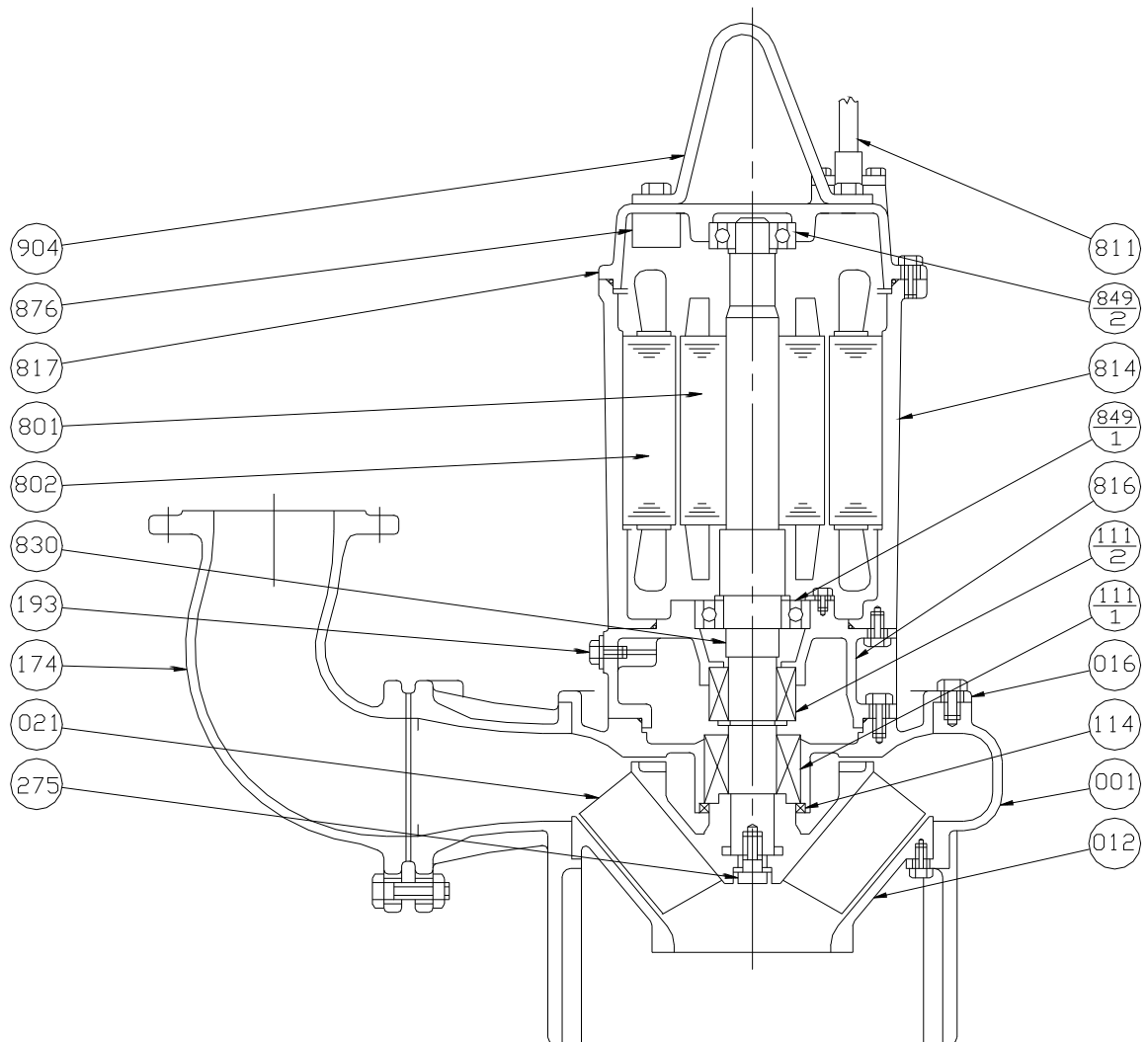


Item Number	Description	Material	Quantity per unit
001	Pump Casing	FC200 Cast iron	1
012	Suction Cover	FC200 Cast Iron	1
016	Mechanical Seal Cover	FC200 Cast iron	1
021	Impeller	FC200 Cast iron	1
111-1	Mechanical Seal		1
111-2	Mechanical Seal		1
114	Oil Seal	NBR Rubber	1
174	Discharge Bend	FC200 Cast iron	1
193	Oil Plug	C3604 or SUS304 Brass or 304 Stainless Steel	1
211	Airvent Valve	C3604 Brass	1
275	Impeller Bolt	SUS304 Stainless Steel	1

Item Number	Description	Material	Quantity per unit
801	Rotor		1
802	Stator		1
811	Submersible Cable		1
814	Motor Frame	FC150 Cast Iron	1
816	Power Side Bracket	FC150 Cast Iron	1
817	Opposite Side Bracket	FC150 Cast Iron	1
830	Shaft	SUS403 Stainless Steel	1
849-1	Ball Bearing		1
849-2	Ball Bearing		1
904	Lifting Hanger	SS Steel	1

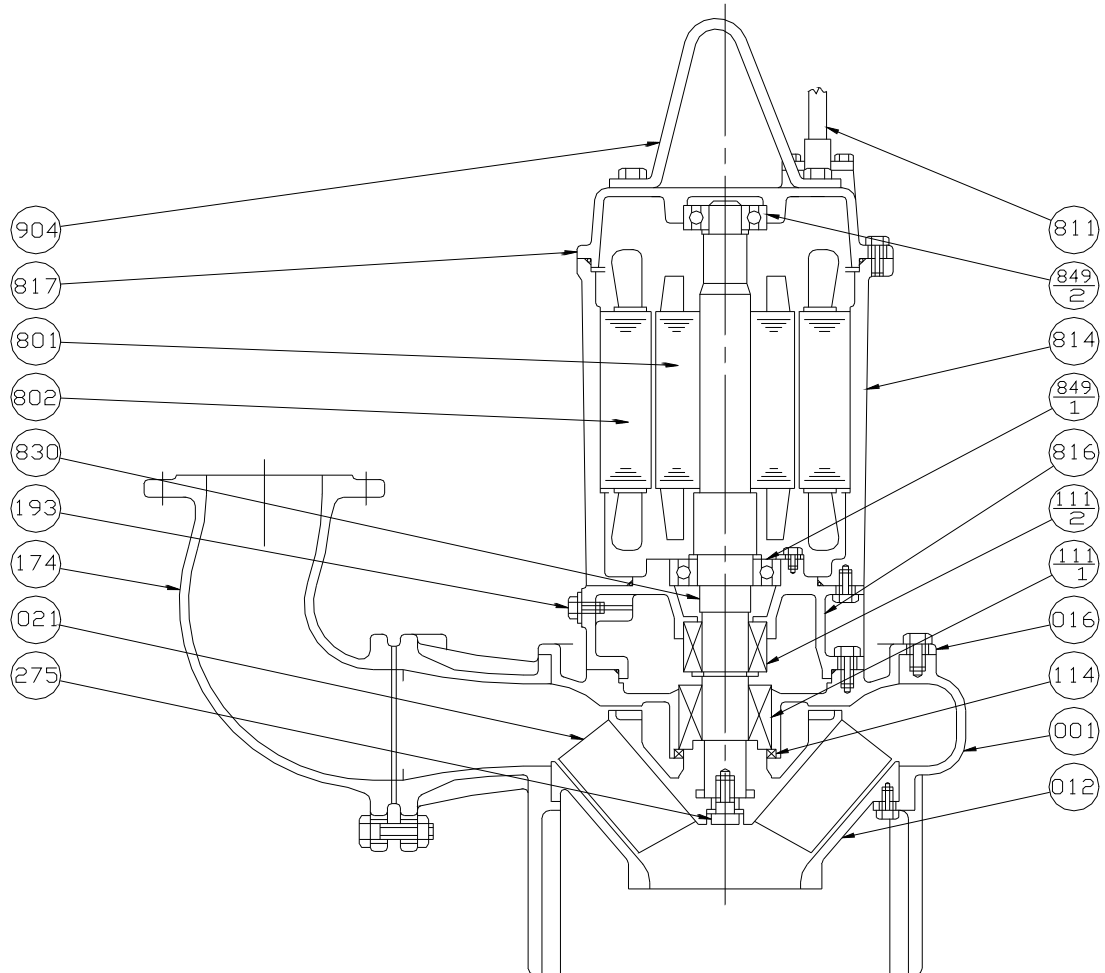
Sectional View - 250 DL 57.5

50Hz



Item Number	Description	Material	Quantity per unit
001	Pump Casing	FC200 Cast iron	1
012	Suction Cover	FC200 Cast Iron	1
016	Mechanical Seal Cover	FC200 Cast iron	1
021	Impeller	FC200 Cast iron	1
111-1	Mechanical Seal		1
111-2	Mechanical Seal		1
114	Oil Seal	NBR Rubber	1
174	Discharge Bend	FC200 Cast iron	1
193	Oil Plug	C3604 or SUS304 Brass or 304 Stainless Steel	1
275	Impeller Bolt	SUS304 Stainless Steel	1

Item Number	Description	Material	Quantity per unit
801	Rotor		1
802	Stator		1
811	Submersible Cable		1
814	Motor Frame	FC150 Cast Iron	1
816	Power Side Bracket	FC150 Cast Iron	1
817	Opposite Side Bracket	FC150 Cast Iron	1
830	Shaft	SUS403 Stainless Steel	1
849-1	Ball Bearing		1
849-2	Ball Bearing		1
876	Protector Installed		1
904	Lifting Hanger	SS Steel	1

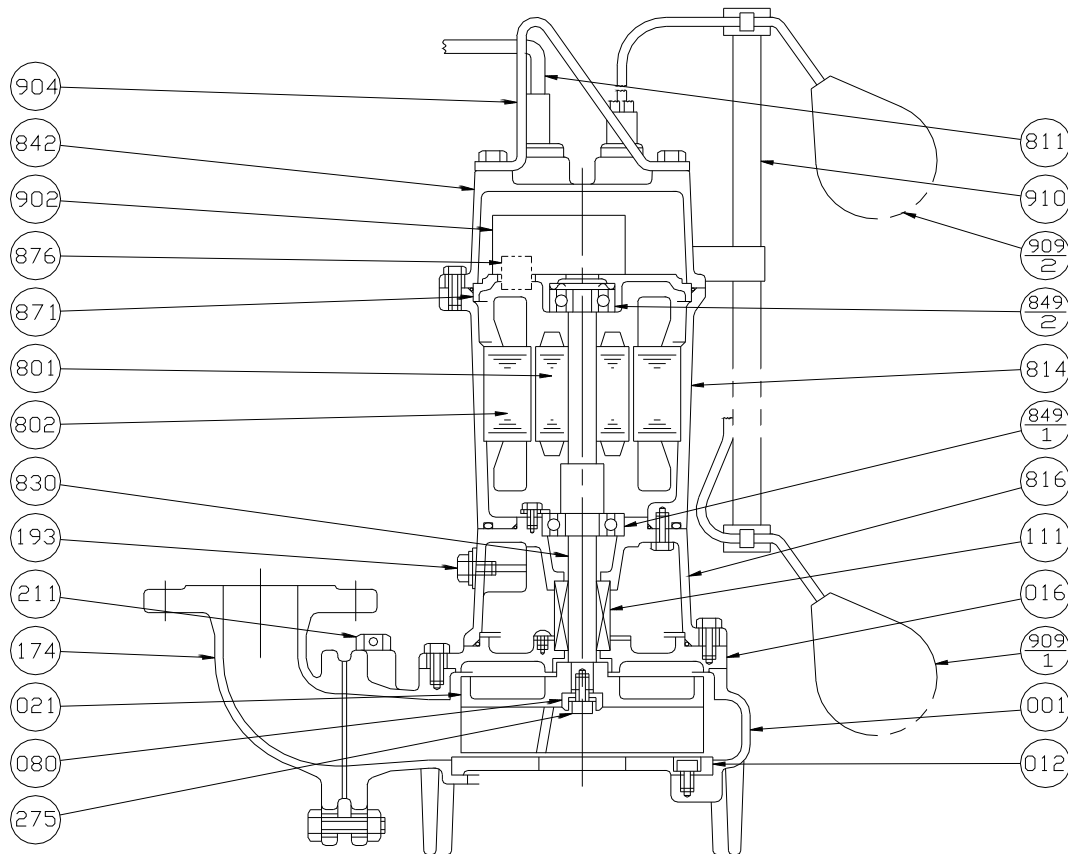


Item Number	Description	Material	Quantity per unit
001	Pump Casing	FC200 Cast iron	1
012	Suction Cover	FC200 Cast Iron	1
016	Mechanical Seal Cover	FC200 Cast iron	1
021	Impeller	FC200 Cast iron	1
111-1	Mechanical Seal		1
111-2	Mechanical Seal		1
114	Oil Seal	NBR Rubber	1
174	Discharge Bend	FC200 Cast iron	1
193	Oil Plug	C3604 or SUS304 Brass or 304 Stainless Steel	1
275	Impeller Bolt	SUS304 Stainless Steel	1

Item Number	Description	Material	Quantity per unit
801	Rotor		1
802	Stator		1
811	Submersible Cable		1
814	Motor Frame	FC150 Cast Iron	1
816	Power Side Bracket	FC150 Cast Iron	1
817	Opposite Side Bracket	FC150 Cast Iron	1
830	Shaft	SUS403 Stainless Steel	1
849-1	Ball Bearing		1
849-2	Ball Bearing		1
904	Lifting Hanger	SS Steel	1

Sectional View - 65(80) DLA 51.5

50Hz

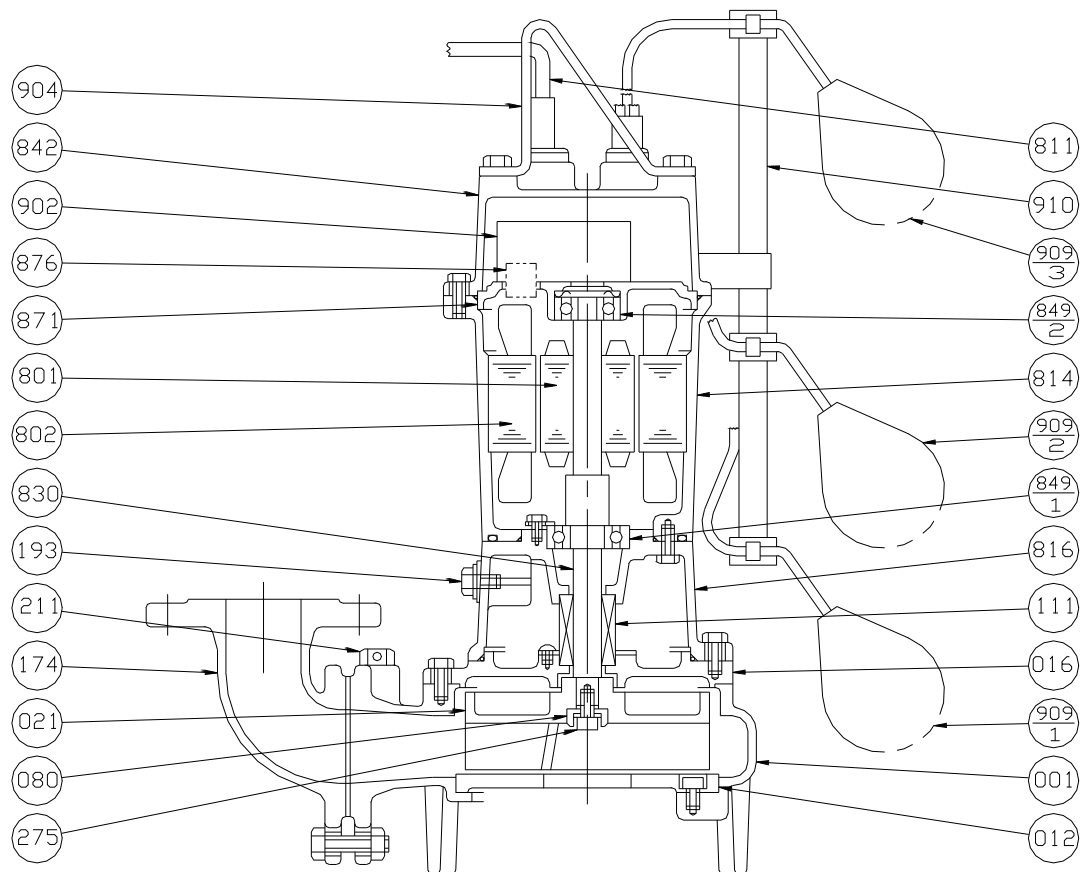


Item Number	Description	Material	Quantity per unit
001	Pump Casing	FC200 Cast iron	1
012	Suction Cover	FC200 Cast Iron	1
016	Mechanical Seal Cover	FC200 Cast iron	1
021	Impeller	FC200 Cast iron	1
080	Bushing	SS Steel	1
111	Mechanical Seal		1
174	Discharge Bend	FC200 Cast iron	1
193	Oil Plug	C3604 or SUS304 Brass or Stainless Steel	1
211	Airvent Valve	C3604 Brass	1
275	Impeller Bolt	SUS304 Stainless Steel	1
801	Rotor		1
802	Stator		1
811	Submersible Cable		1

Item Number	Description	Material	Quantity per unit
814	Motor Frame	FC150 Cast Iron	1
816	Power Side Bracket	FC150 Cast Iron	1
830	Shaft	SUS403 Stainless Steel	1
842	Motor Cover	FC150 Cast Iron	1
849-1	Ball Bearing		1
849-2	Ball Bearing		1
871	Intermediate Bracket	FC150 Cast Iron	1
876	Protector		1
902	Control Device		1
904	Lifting Hanger	SS Steel	1
909-1	Float Switch		1
909-2	Float Switch		1
910	Float Pole	Plastics	1

Sectional View - 65(80) DLJ 51.5

50Hz



Item Number	Description	Material	Quantity per unit
001	Pump Casing	FC200 Cast iron	1
012	Suction Cover	FC200 Cast Iron	1
016	Mechanical Seal Cover	FC200 Cast iron	1
021	Impeller	FC200 Cast iron	1
080	Bushing	SS Steel	1
111	Mechanical Seal		1
174	Discharge Bend	FC200 Cast iron	1
193	Oil Plug	C3604 or SUS304 Brass or Stainless Steel	1
211	Airvent Valve	C3604 Brass	1
275	Impeller Bolt	SUS304 Stainless Steel	1
801	Rotor		1
802	Stator		1
811	Submersible Cable		1

Item Number	Description	Material	Quantity per unit
814	Motor Frame	FC150 Cast Iron	1
816	Power Side Bracket	FC150 Cast Iron	1
830	Shaft	SUS403 Stainless Steel	1
842	Motor Cover	FC150 Cast Iron	1
849-1	Ball Bearing		1
849-2	Ball Bearing		1
871	Intermediate Bracket	FC150 Cast Iron	1
876	Protector		1
902	Control Device		1
904	Lifting Hanger	SS Steel	1
909-1	Float Switch		1
909-2	Float Switch		1
909-3	Float Switch		1
910	Float Pole	Plastics	1