



EBARA

Quality System
ISO 9001 : 2000
Lic no: QEC22090
Quality
Endorsed
Company

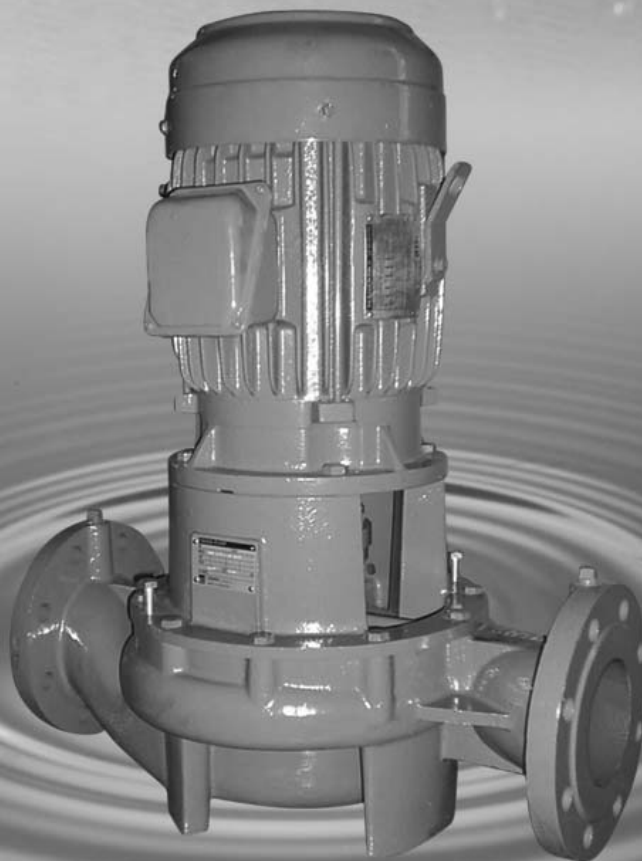
LPD 9001 R0

**TECHNICAL DATA BOOK
VERTICAL IN-LINE CENTRIFUGAL PUMP**

MODEL LPDA

Suction and Discharge Size 100 ~ 200 mm

50 HZ



INDEX

ITEM	DESCRIPTION	PAGE
1	Applications and Features	1
2	Performance Chart and Model Code	2
3	Specifications	3
4	Sectional View	4
5	Shaft Seal and O-Ring	5
6	Dimension	6
7	Performance Curve	7 - 21

Note:

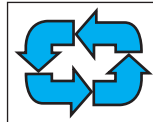
All specifications subject to change without prior notice

■ Applications



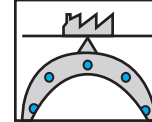
Water Supply

- Boosting pump System
- High-rise building



Water Circulation

- Circulating of water in Heating and cooling



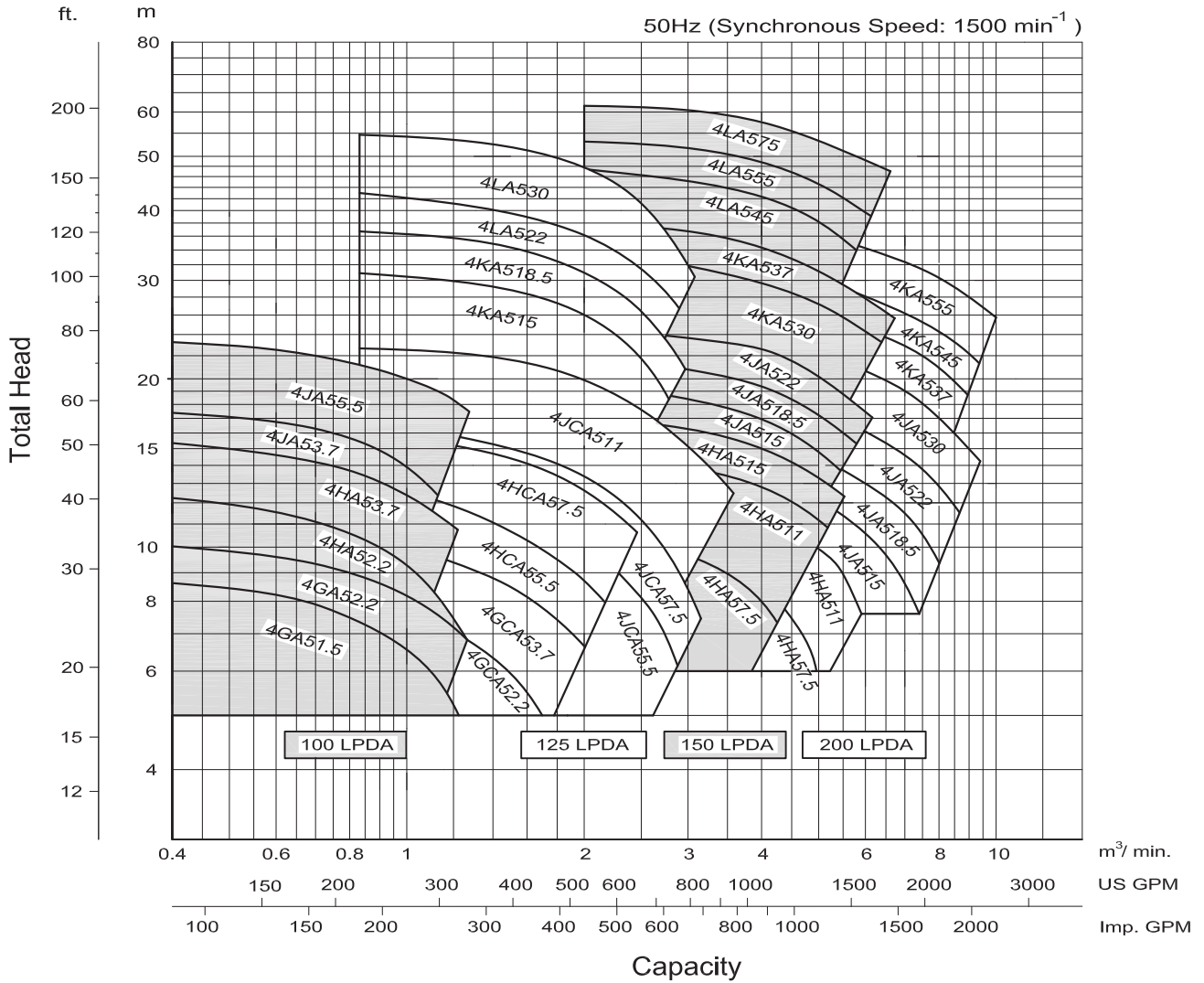
Industrial Use

- Liquid transfer

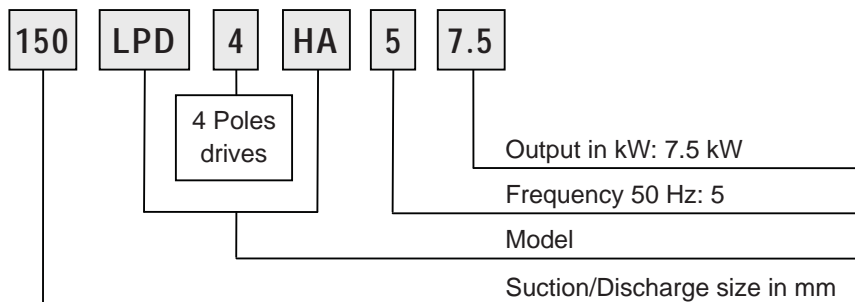
■ Features

- Vertical in-line single stage pump.
- Compact and lightweight.
- Easy removal and maintenance, BPO (Back pull out) system allows all rotating elements to be removed without disconnecting suction and discharge pipe work.
- In-line suction – discharge.
- Non-overload design to ensure stable performance for all applications.
- Wide range application with flow capacity up to 10 m³/min.
- Higher working pressure up to 16 bars.

■ Performance Chart



■ Model Code



Vertical In-Line Centrifugal Pump

Model LPDA

Specifications

50 HZ

■ Pump

Description		Standard	Option
Liquid handled	Type of Liquid	Fresh Water	
	Temperature	0 ~ 80 °C	
Max. Positive suction pressure		10 bar	16 bar
Max. Discharge pressure		16 bar	20 bar
Approximation speed		1450 min ⁻¹	1750 min ⁻¹
Location		Indoor / Outdoor	
Covering Range	Suction Dia.	100 to 200 mm	
	Flow rate	0.4 to 10 m ³ /min	
	Power	1.5 to 75 kW	
Construction	Pump Type	Inline	
	Casing split	Vertical back pull out	
	Impeller	Enclosed	
	Shaft seal	Mechanical Seal	
	Shaft	Stub Shaft	
	Sealing	Self flushing	External flushing
Material	Casing	Cast Iron	Ductile cast iron; Bronze
	Impeller	Bronze	Cast Iron
	Shaft	SUS 304 stainless steel	
	Mech. Seal	Ceramic/Carbon	SiC/Carbon; SiC/SiC
	Motor Casing	Aluminum	Cast Iron
Flanges	Suction	DIN PN-16	JIS 16 KRF; ANSI 250
	Discharge	DIN PN-16	JIS 16 KRF; ANSI 250
Motor	Type	IEC Standard, Flange Mounted type	NEMA Standard, Flange Mounted type
	No. of pole	4	
	Synch. Speed	1500 min ⁻¹	1800 min ⁻¹
	Insulation class	F	
	Protection	IP 55	
	Volt/ Phase/ Hz	380V-415V / 3 Ph. / 50 Hz	400V-460/ 3 Ph. / 60 Hz
Accessories		-	Sole Plate

■ Paint

Part Name	Material (JIS Code)	Standard		Optional Inner Surface
		Inner Surface	Outer Surface	
Casing	Cast Iron (FC)	1 coat of Zinc chromate primer	- Under coat 1 coat of zinc chromate primer	1 coat of tar epoxy resin
Casing Bracket	Cast Iron (FC)		- Finish coat 1 coat of phthalic resin enamel	
Sole Plate	Cast Iron (FC)	- Under coat 1 coat of zinc chromate primer - Finish coat 1 coat of phthalic resin		

Vertical In-Line Centrifugal Pump

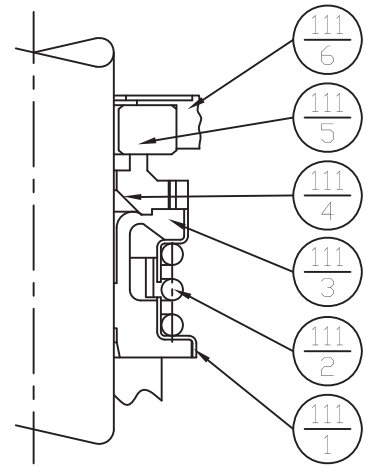
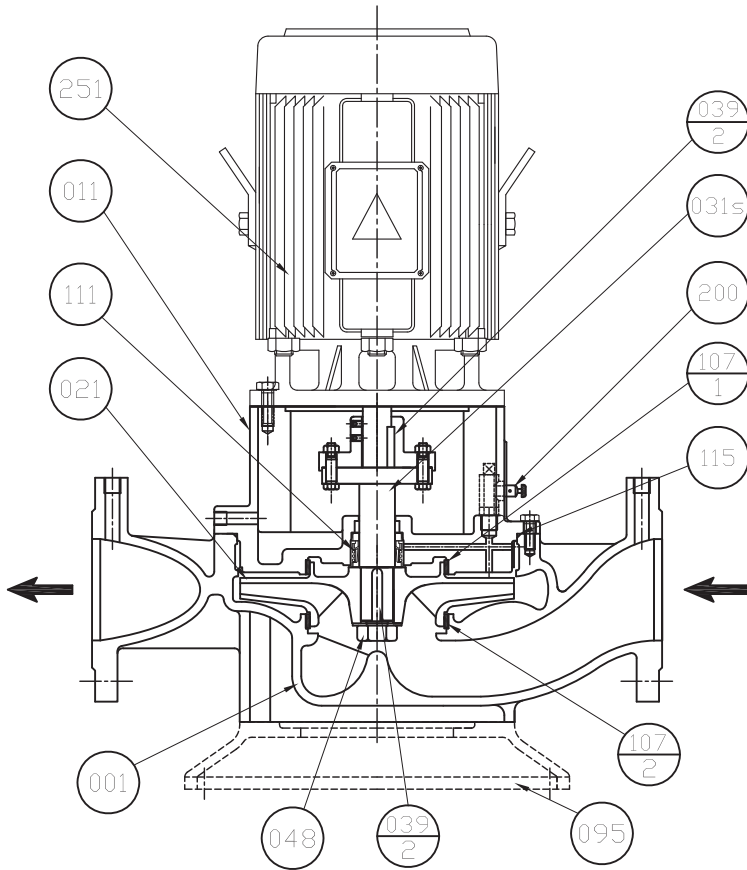
Model LPDA

Sectional View

50 HZ

▪ Pump

▪ Mechanical Seal



095	Sole Plate	FC200	1
251	Electric Motor	-	1
200	Air Vent Valve	-	1
115	"O" Ring	NBR	1
111	Mechanical Seal	-	1
107	Liner Ring	BC 6	2
048	Impeller Nut	BRASS	1
039-2	Key	SUS 316	1
039-1	Key	S35C	1
031s	Stub Shaft	SUS 304	1
021	Impeller	BC 6	1
011	Casing Bracket	FC 250	1
001	Casing	FC 250	1
Part No.	Part Name	Material	Qty

111-6	Cup Gasket	NBR	1
111-5	Mating Ring	Ceramic	1
111-4	Seal Ring	Carbon	1
111-3	Bellows	NBR	1
111-2	Spring	Stainless	1
111-1	Spring Holder	Steel	1
Part No.	Part Name	Material	Qty

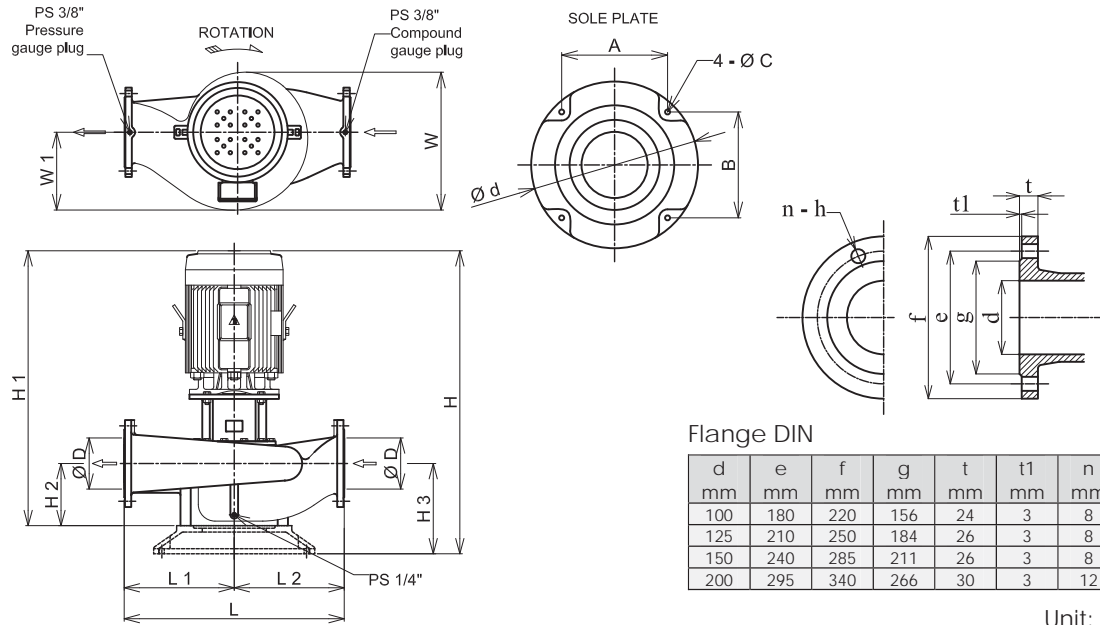
Model	Mechanical Seal	O-Ring
100 LPDGA	EA-262-25	Gs-275
100 LPDHA	EA-262-35	Gs-225
100 LPDJA		Gs-275
125 LPDGCA		Gs-185
125 LPDHCA		Gs-225
125 LPDJCA	EA-262-45	Gs-275
125 LPDKA	EA-262-35	Gs-335
125 LPDLA	EA-262-45	Gs-425
150 LPDHA	EA-262-35	Gs-225
150 LPDJA		Gs-275
150 LPDKA	EA-262-45	Gs-335
150 LPDLA		Gs-425
200 LPDHA	EA-262-35	Gs-225
200 LPDJA	EA-262-45	Gs-275
200 LPDKA	EA-262-55	Gs-335

Vertical In-Line Centrifugal Pump

Model LPDA

Dimensions

50 HZ



Unit:

SIZE (mm)	Model	Output (kW)	Motor Frame Size	ØD	H	H1	H2	H3	L	L1	L2	W1	W	A	B	ØC	Ød	Weight (kg)
100	100 LPD4GA	1.5	900L	100	692	631.5	135	195	520	260	260	153	282	130	130	16	230	70
		2.2	100L		706.5	646.5												80
	2.2	100L	694.5	634.5	93													
	3.7	112M	751	691	104													
	3.7	112M	751	676	120													
100 LPD4JA	5.5	132S	100	780	705	125	200	560	280	280	185	352	220	220	16	270	138	
125	125 LPD4GCA	2.2	100L	125	739.5	664.5	165	240	600	300	300	178	320	220	220	16	270	82
		3.7	112M		796	721												93
	5.5	132S	834	759	126													
	7.5	132M	872	797	140													
	5.5	132S	879	789	197													
	7.5	132M	917	827	212													
	11	160M	1033	943	250													
	15	160L	1027	937	274													
	18.5	180MC	1047	957	314													
	22	180LC	1158	1068	407													
30	200LC	1251	1161	480														
150	150 LPD4HA	7.5	132M	150	922	832	200	290	700	350	350	243	430	300	300	19	350	193
		11	160M		1038	948												230
		15	160L		1082	992												248
	15	160L	1087	997	268													
	18.5	180MC	1107	1017	308													
	22	180LC	1145	1055	340													
	30	200LC	1268	1158	457													
	37	225SC	1319	1209	506													
	45	225MC	1335	1225	580													
	55	250SC	1315	1205	705													
75	250MC	1445	1335	780														
200	200 LPD4HA	5.5	132S	200	934	844	250	340	900	450	450	270	480	300	300	19	370	216
		7.5	132M		972	882												230
		11	160M		1088	998												269
	15	160L	1167	1057	328													
	18.5	180MC	1187	1077	368													
	22	180LC	1225	1115	400													
	30	200LC	1318	1208	474													
	37	225SC	1361	1251	553													
	45	225MC	1386	1276	577													
	55	250SC	1458	1348	700													

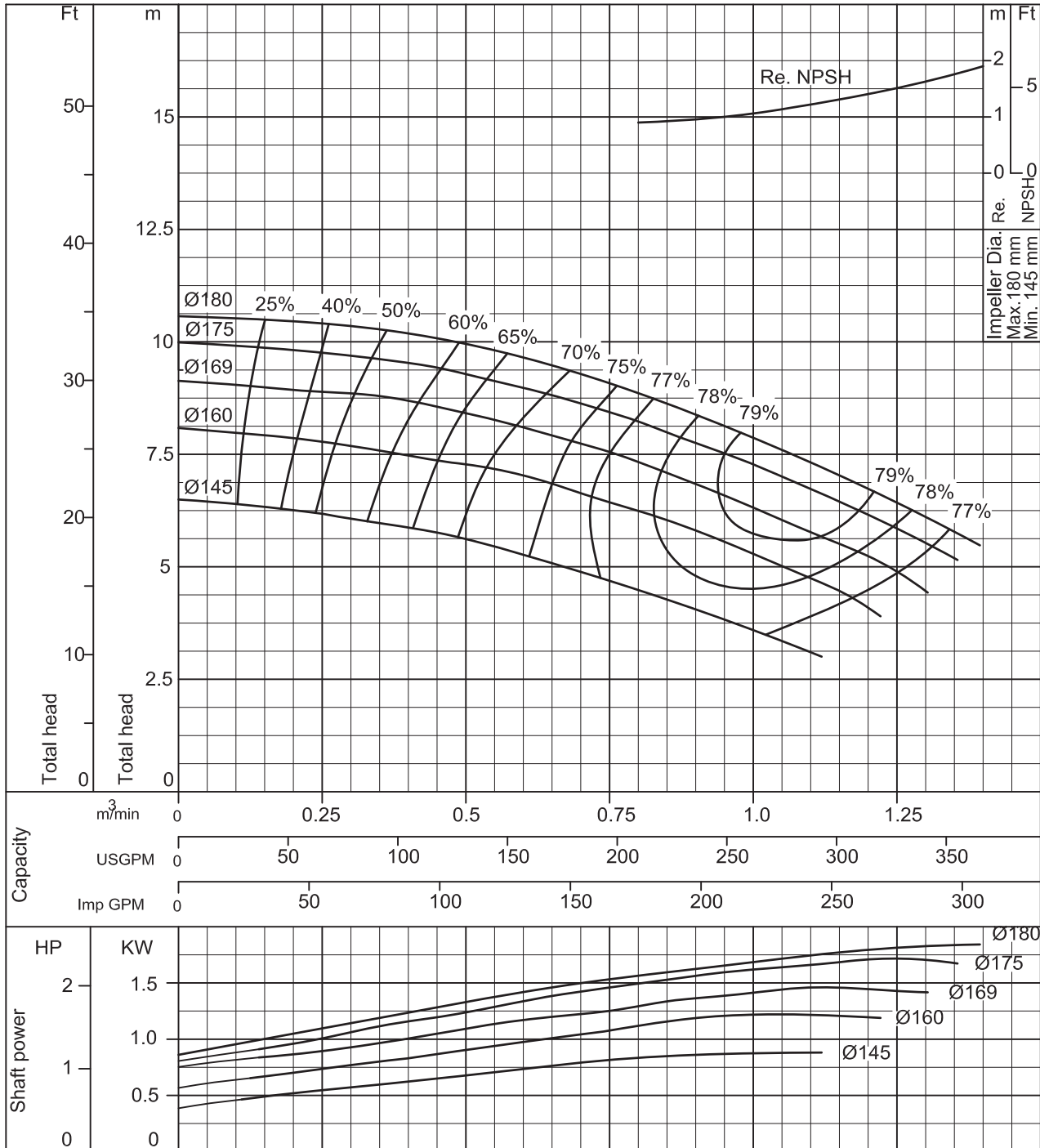
Vertical In-Line Centrifugal Pump

Model LPDA

Performance Curve

50 HZ

100 LPDGA	According to ISO testing code 2548 Class C
50Hz (Approx. speed 1450min ⁻¹)	S.G.= 1.0 Vis.= 1.0 cSt



Curve No. LPD-5401R0

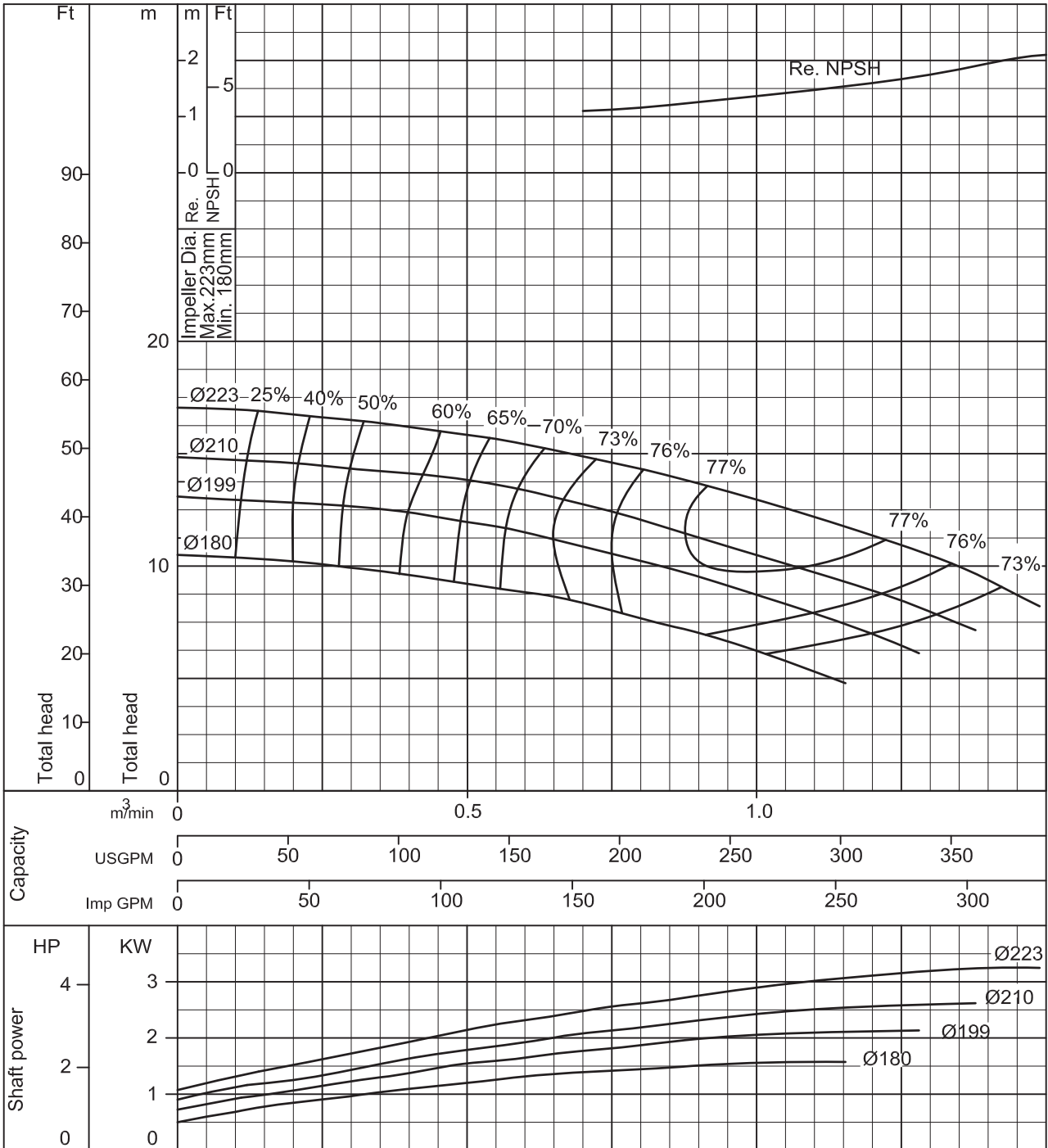
Vertical In-Line Centrifugal Pump

Model LPDA

Performance Curve

50 HZ

100 LPDHA	According to ISO testing code 2548 Class C
50Hz (Approx. speed 1450min ⁻¹)	S.G.= 1.0 Vis.= 1.0 cSt



Curve No. LPD-5402R0

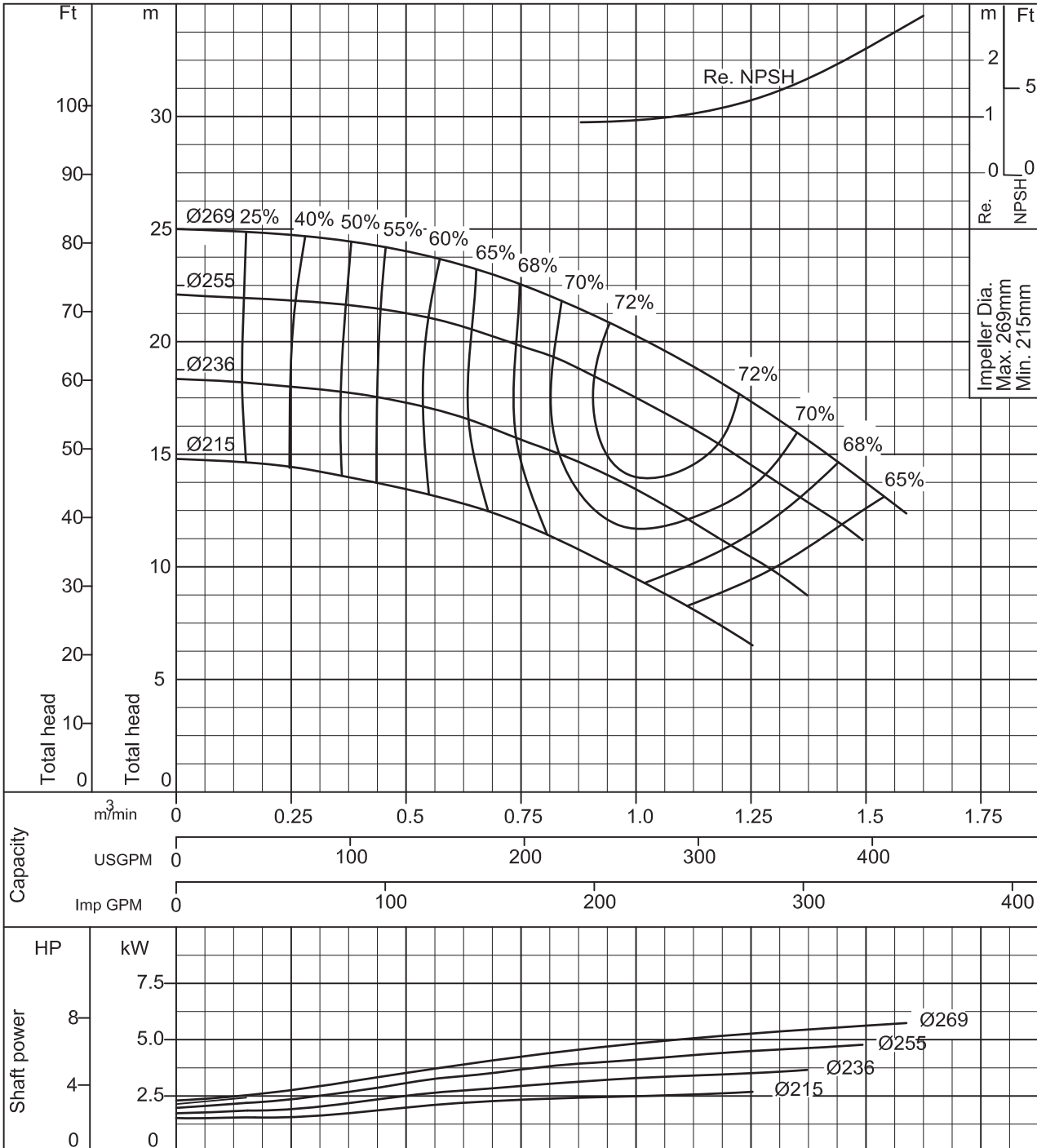
Vertical In-Line Centrifugal Pump

Model LPDA

Performance Curve

50 HZ

100 LPDJA	According to ISO testing code 2548 Class C
50Hz (Approx. speed 1450min ⁻¹) S.G.= 1.0 Vis.= 1.0 cSt	



Curve No. LPD-5403R0

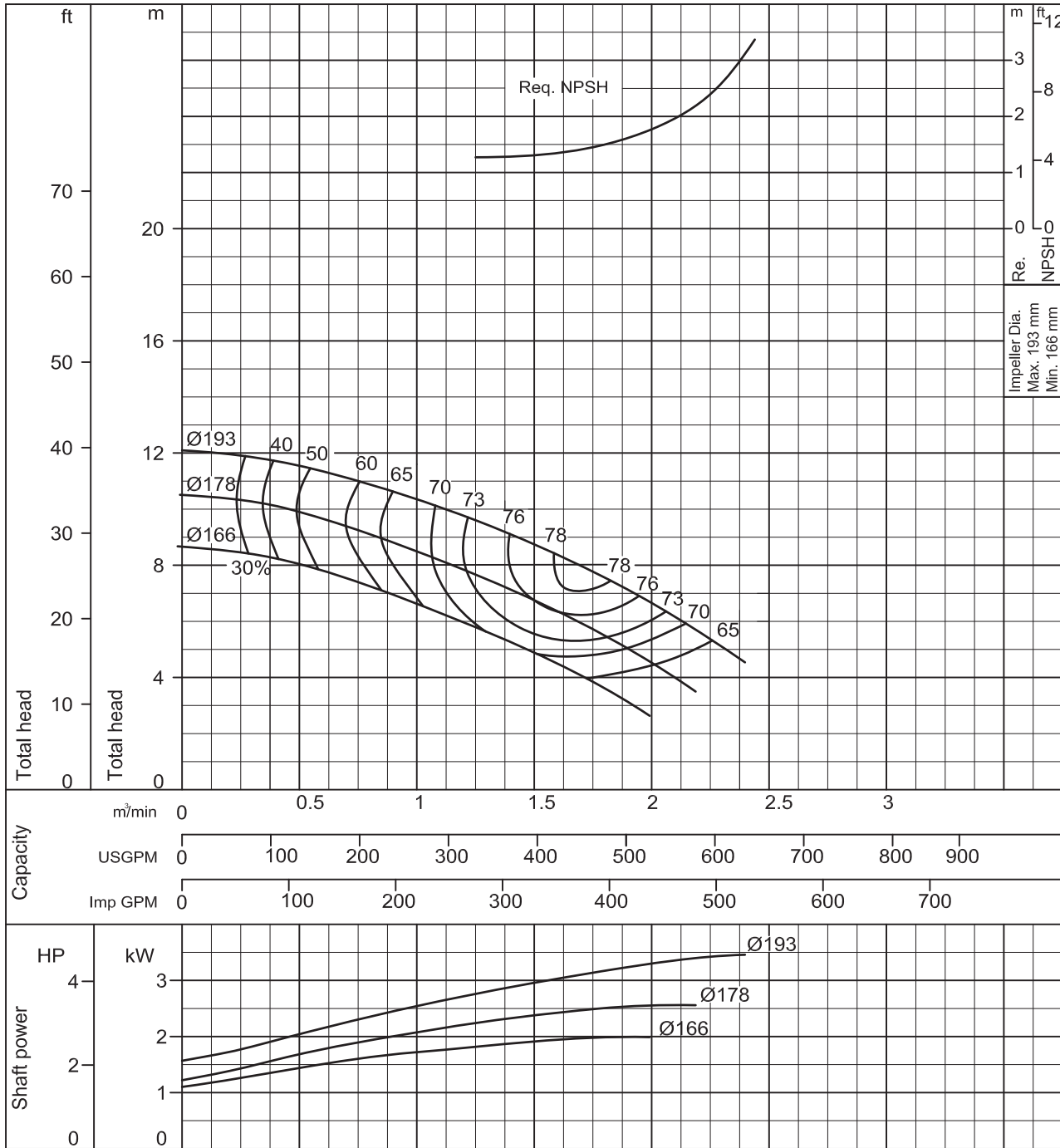
Vertical In-Line Centrifugal Pump

Model LPDA

Performance Curve

50 HZ

125 LPDGCA	According to ISO testing code 2548 Class C
50Hz (Approx. speed 1450 min ⁻¹)	S.G.= 1.0 Vis.= 1.0 cSt



Curve No. LPD-5404R0

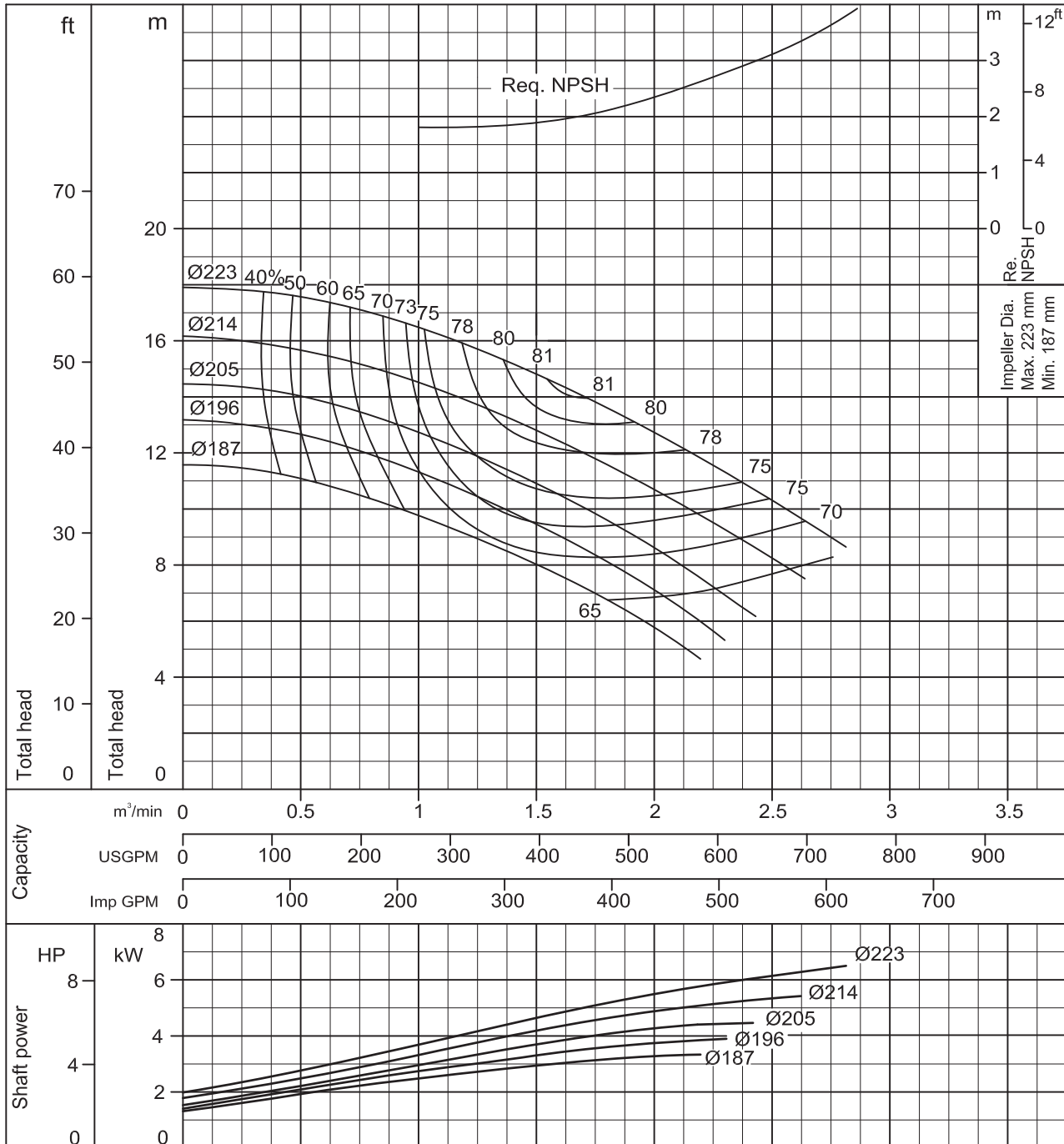
Vertical In-Line Centrifugal Pump

Model LPDA

Performance Curve

50 HZ

125 LPDHCA	According to ISO testing code 2548 Class C
50Hz (Approx. speed 1450 min ⁻¹)	S.G.= 1.0 Vis.= 1.0 cSt



Curve No. LPD-5405R0

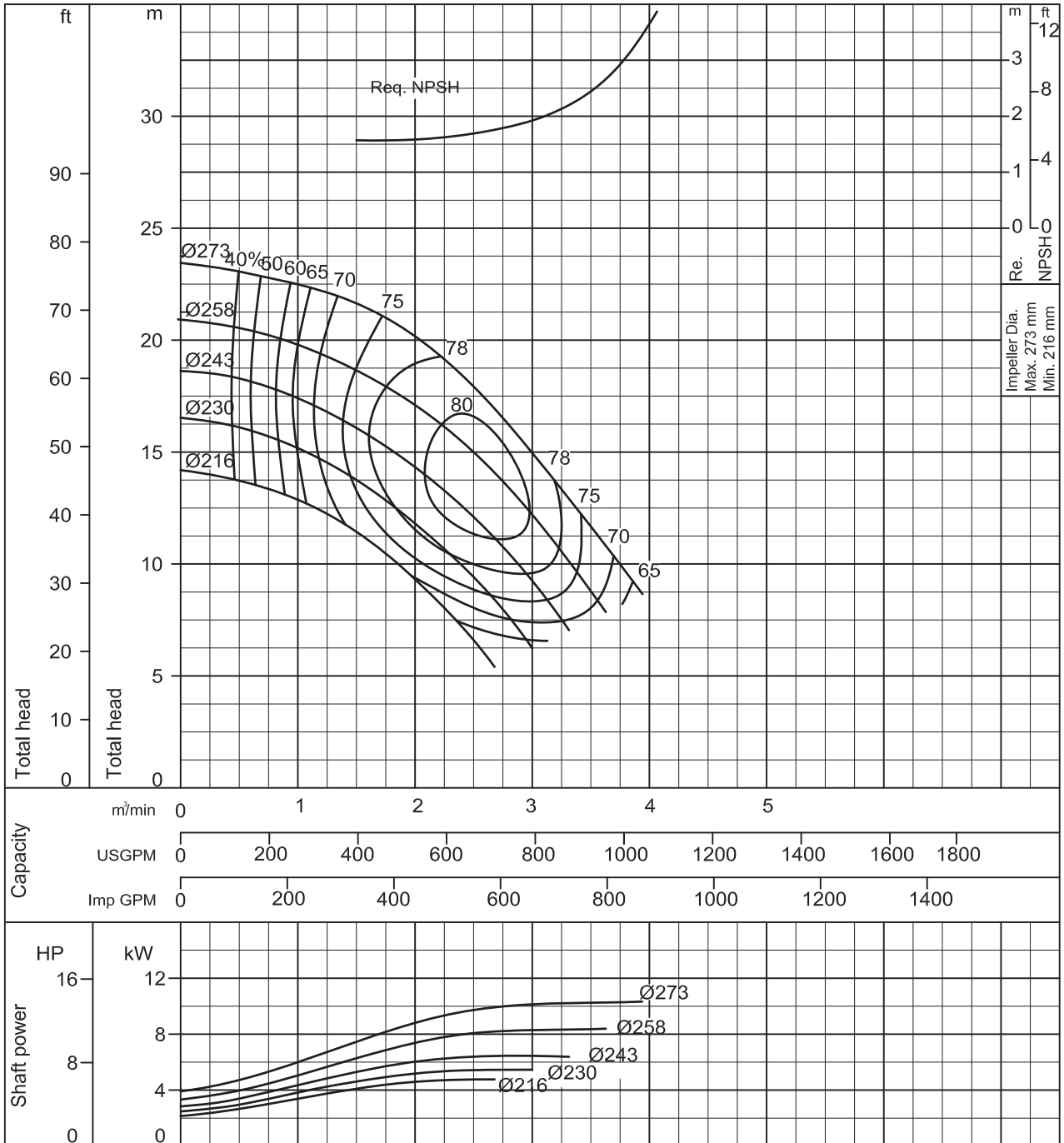
Vertical In-Line Centrifugal Pump

Model LPDA

Performance Curve

50 HZ

125 LPDJCA	According to ISO testing code 2548 Class C
50Hz (Approx. speed 1450 min ⁻¹)	S.G.= 1.0 Vis.= 1.0 cSt



Curve No. LPD-5406R0

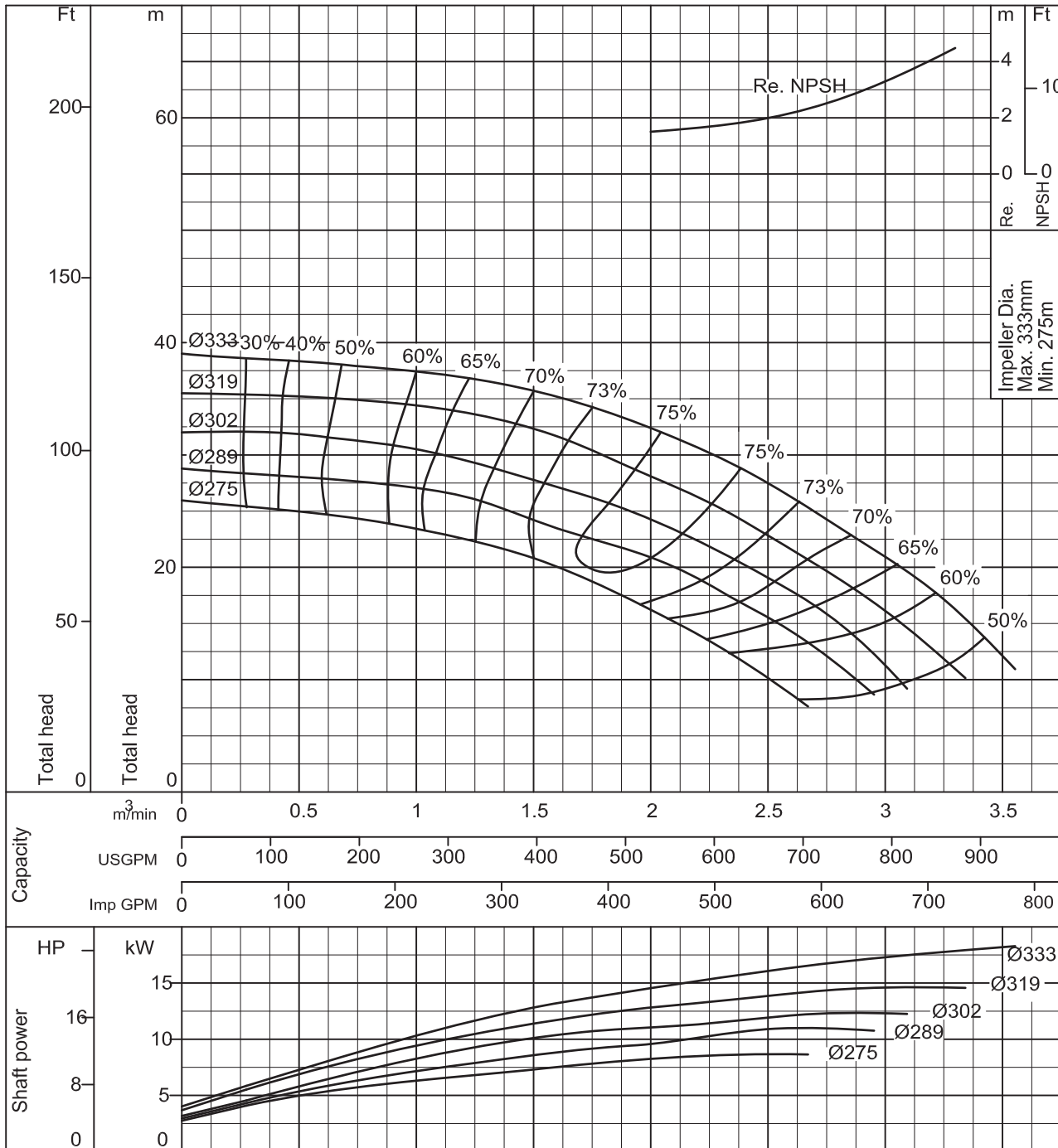
Vertical In-Line Centrifugal Pump

Model LPDA

Performance Curve

50 HZ

125 LPDKA	According to ISO testing code 2548 Class C
50Hz (Approx. speed 1450min ⁻¹)	S.G.= 1.0 Vis.= 1.0 cSt



Curve No. LPD-5407R0

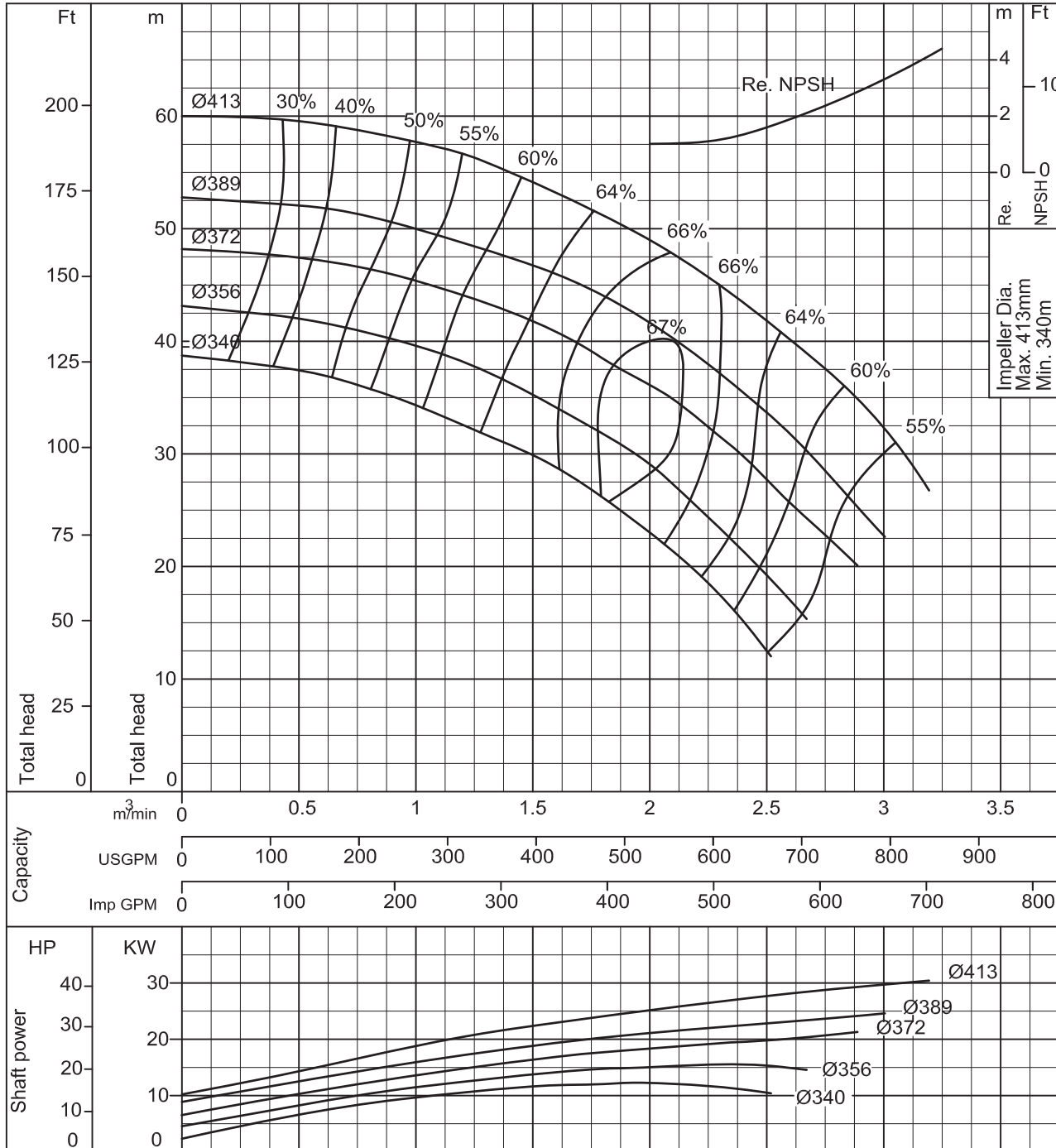
Vertical In-Line Centrifugal Pump

Model LPDA

Performance Curve

50 HZ

125 LPDLA	According to ISO testing code 2548 Class C
50Hz (Approx. speed 1450min ⁻¹)	S.G.= 1.0 Vis.= 1.0 cSt



Curve No. LPD-5408R0

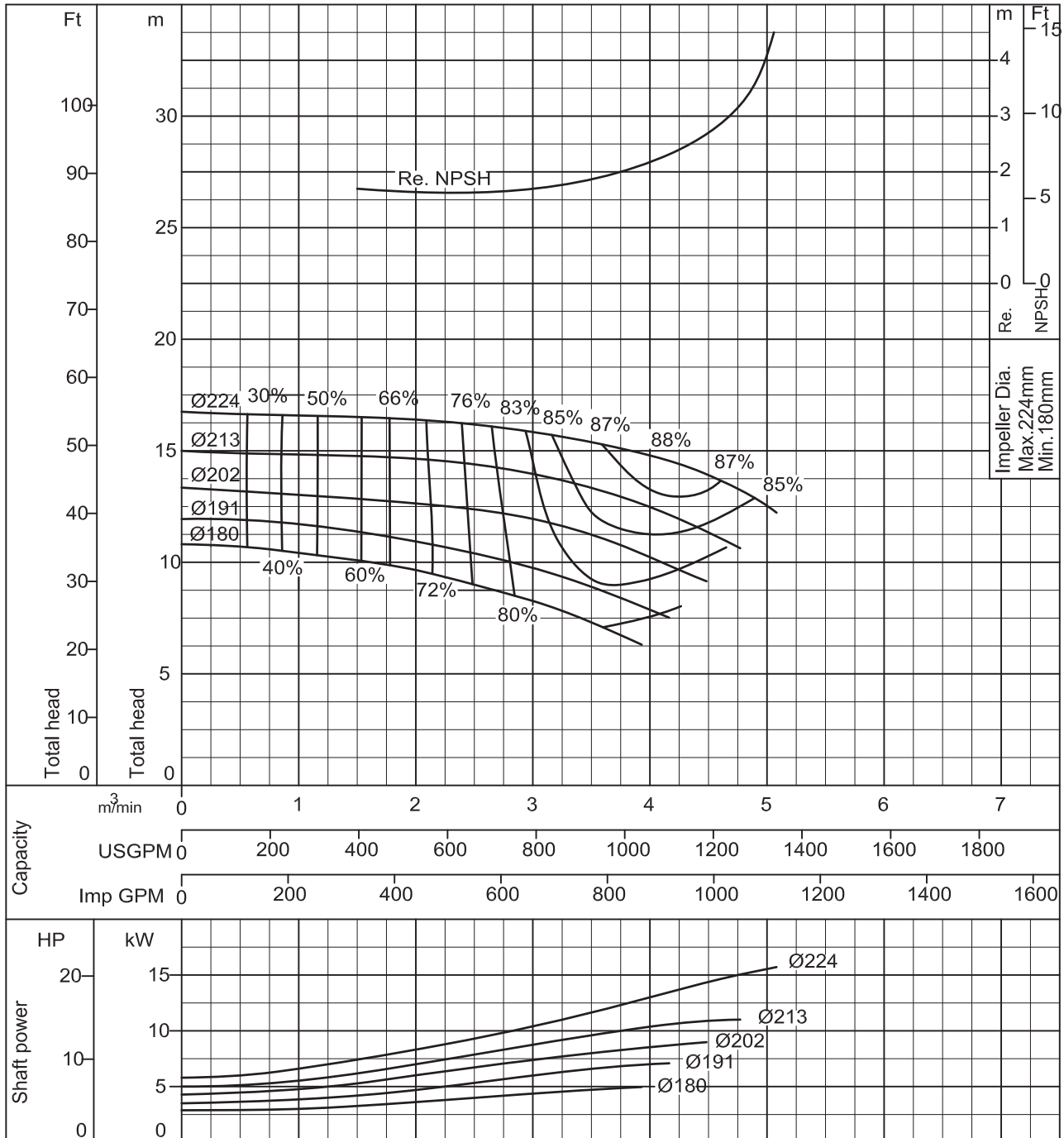
Vertical In-Line Centrifugal Pump

Model LPDA

Performance Curve

50 HZ

150 LPDHA	According to ISO testing code 2548 Class C
50Hz (Approx. speed 1450min ⁻¹)	S.G.= 1.0 Vis.= 1.0 cSt



Curve No. LPD-5409R0

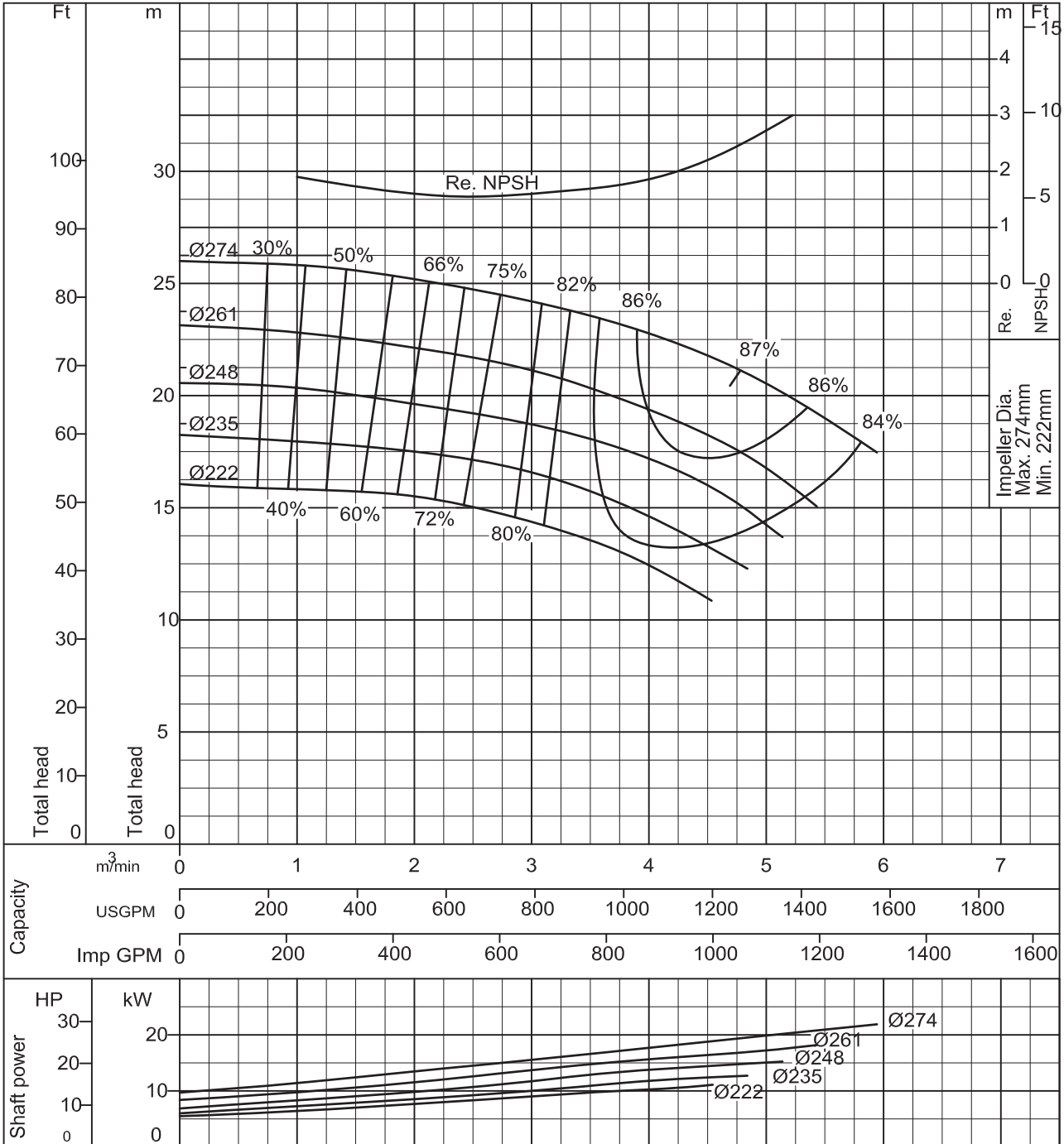
Vertical In-Line Centrifugal Pump

Model LPDA

Performance Curve

50 HZ

150 LPDJA	According to ISO testing code 2548 Class C
50Hz (Approx. speed 1450min ⁻¹)	S.G.= 1.0 Vis.= 1.0 cSt



Curve No. LPD-5410R0

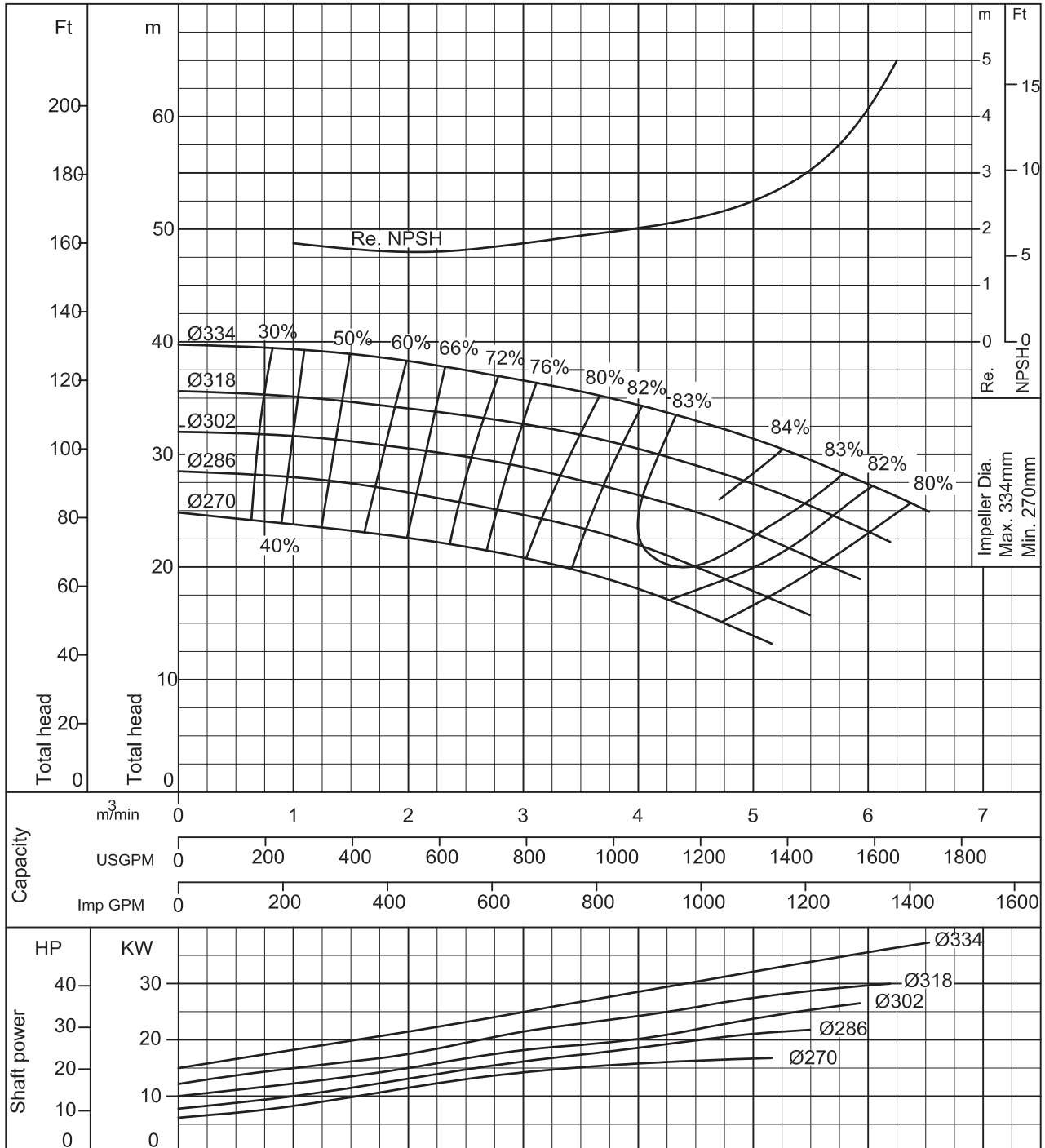
Vertical In-Line Centrifugal Pump

Model LPDA

Performance Curve

50 HZ

150 LPDKA	According to ISO testing code 2548 Class C
50Hz (Approx. speed 1450min ⁻¹)	S.G.= 1.0 Vis.= 1.0 cSt



Curve No. LPD-5411R0

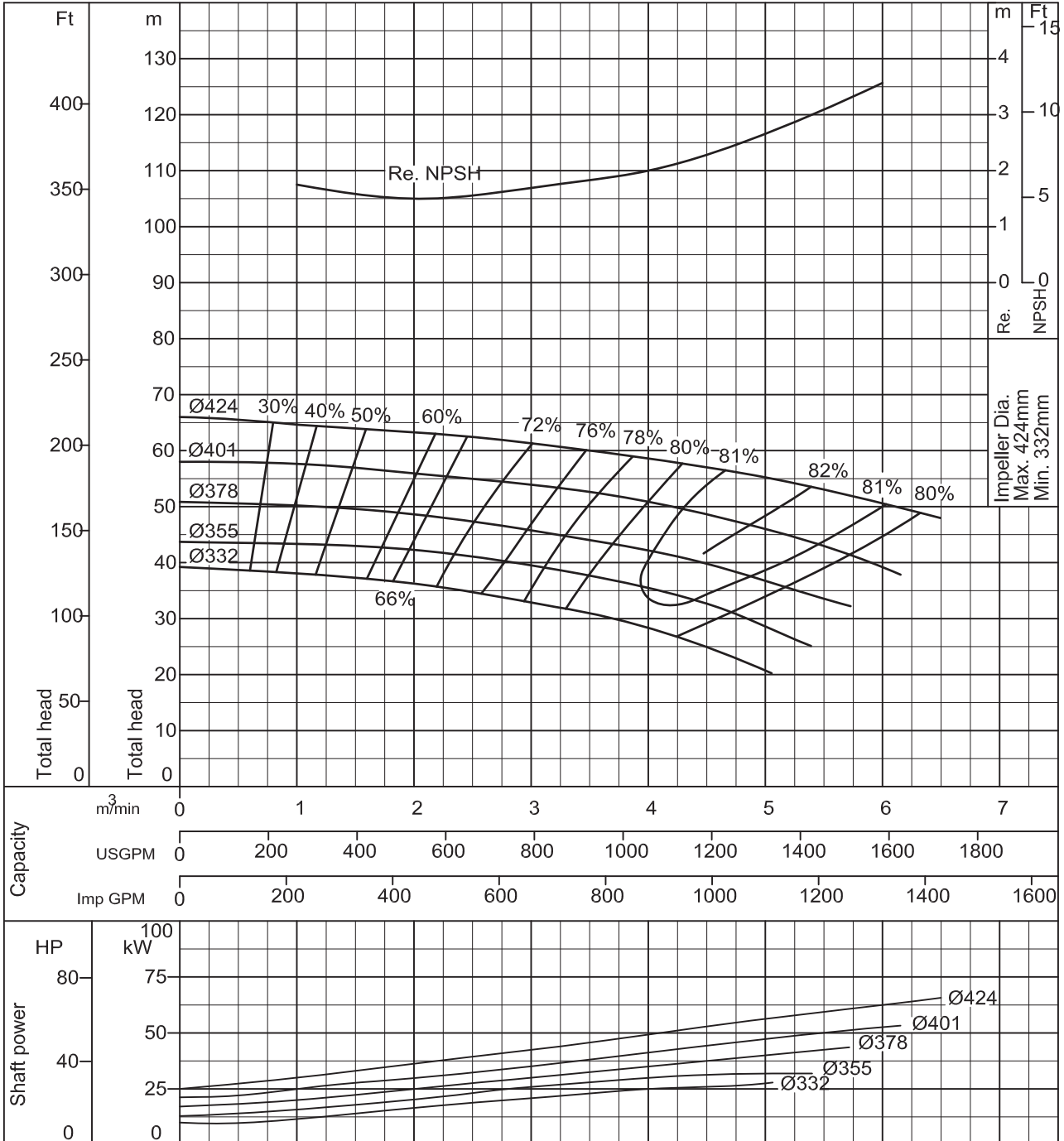
Vertical In-Line Centrifugal Pump

Model LPDA

Performance Curve

50 HZ

150 LPDLA	According to ISO testing code 2548 Class C
50Hz (Approx. speed 1450min ⁻¹)	S.G.= 1.0 Vis.= 1.0 cSt



Curve No. LPD-5412R0

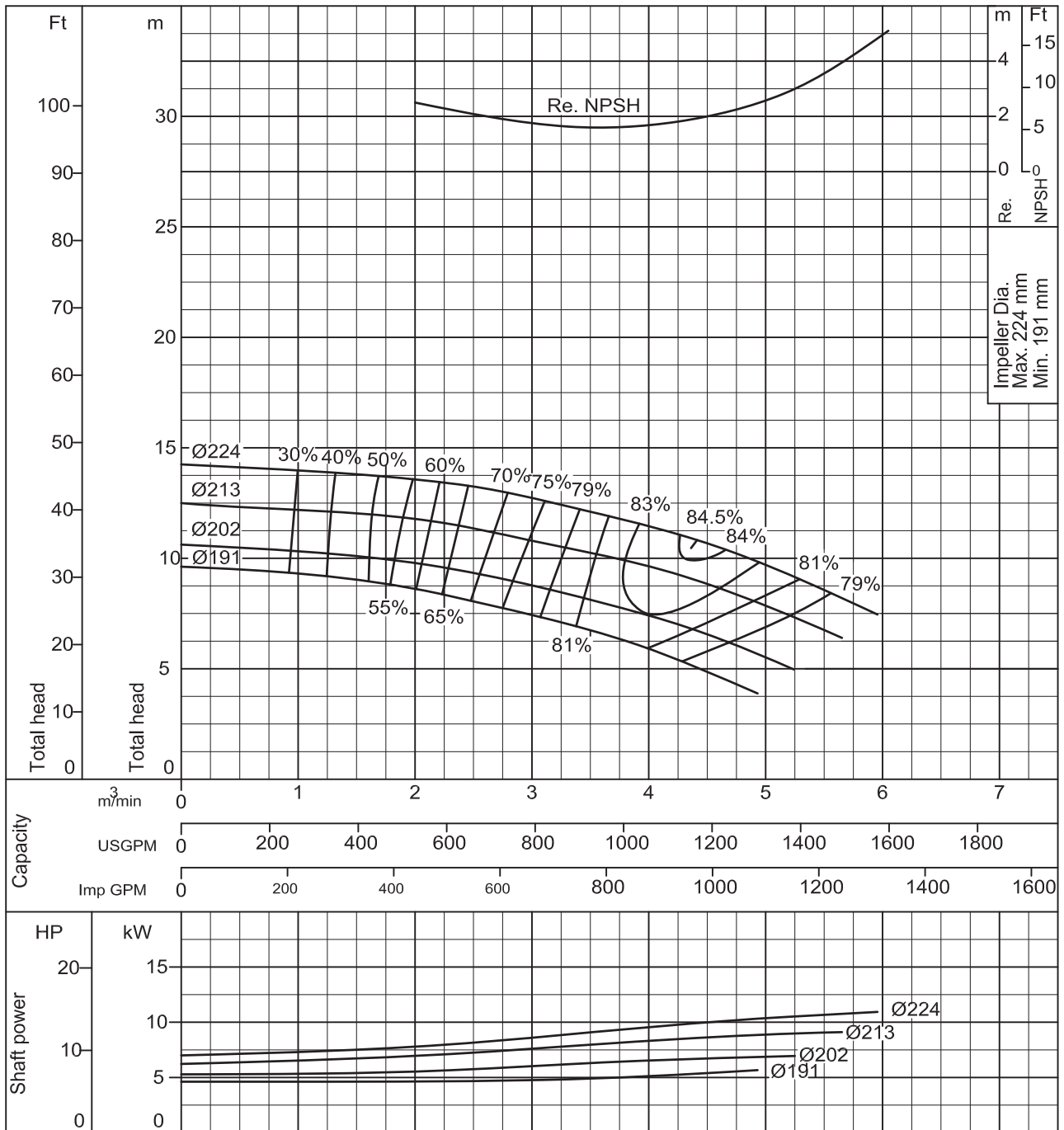
Vertical In-Line Centrifugal Pump

Model LPDA

Performance Curve

50 HZ

200 LPDHA	According to ISO testing code 2548 Class C
50Hz (Approx. speed 1450min ⁻¹)	S.G.= 1.0 Vis.= 1.0 cSt



Curve No. LPD-5413R0

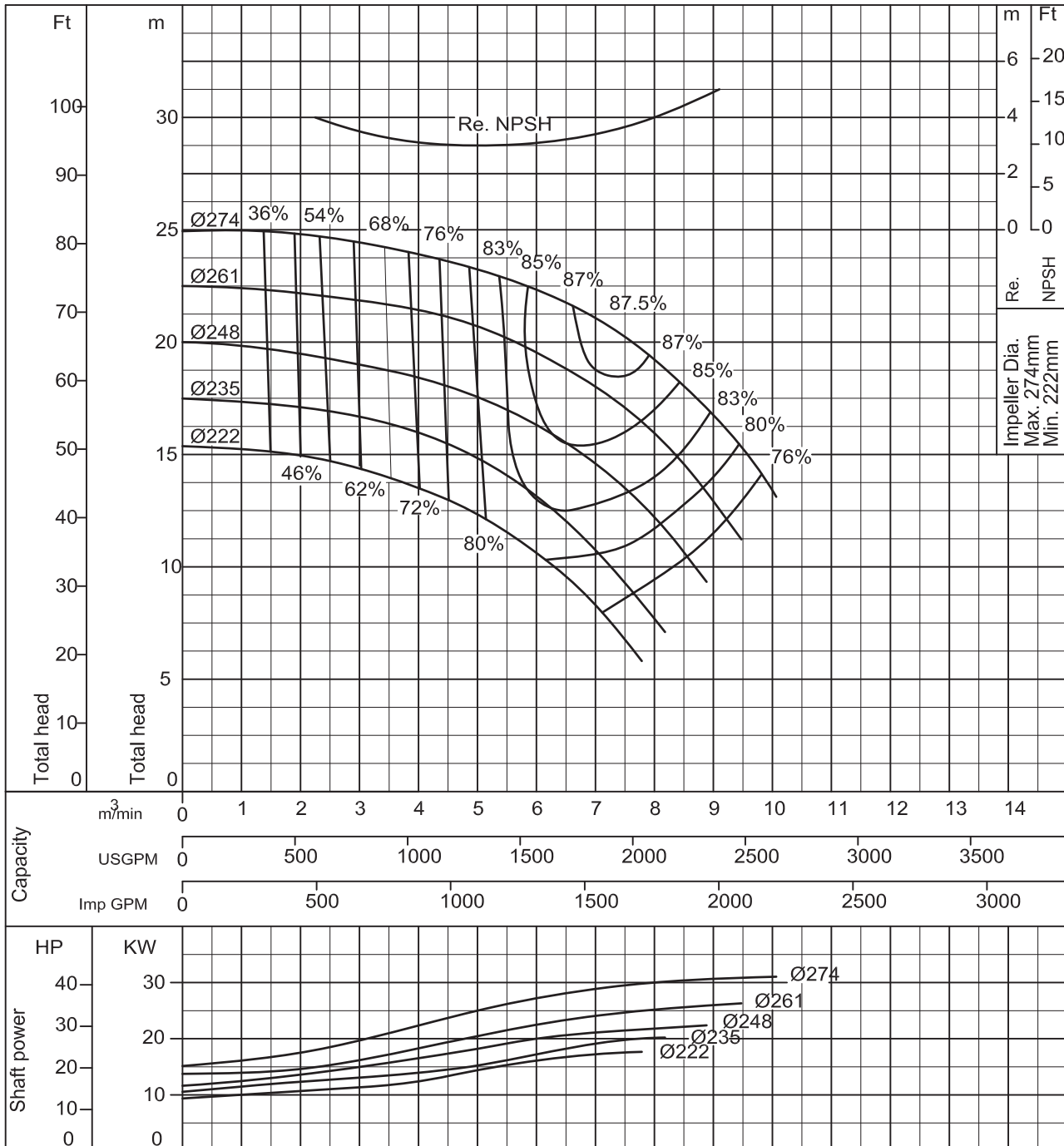
Vertical In-Line Centrifugal Pump

Model LPDA

Performance Curve

50 HZ

200 LPDJA	According to ISO testing code 2548 Class C
50Hz (Approx. speed 1450min ⁻¹)	S.G.= 1.0 Vis.= 1.0 cSt



Curve No. LPD-5414R0

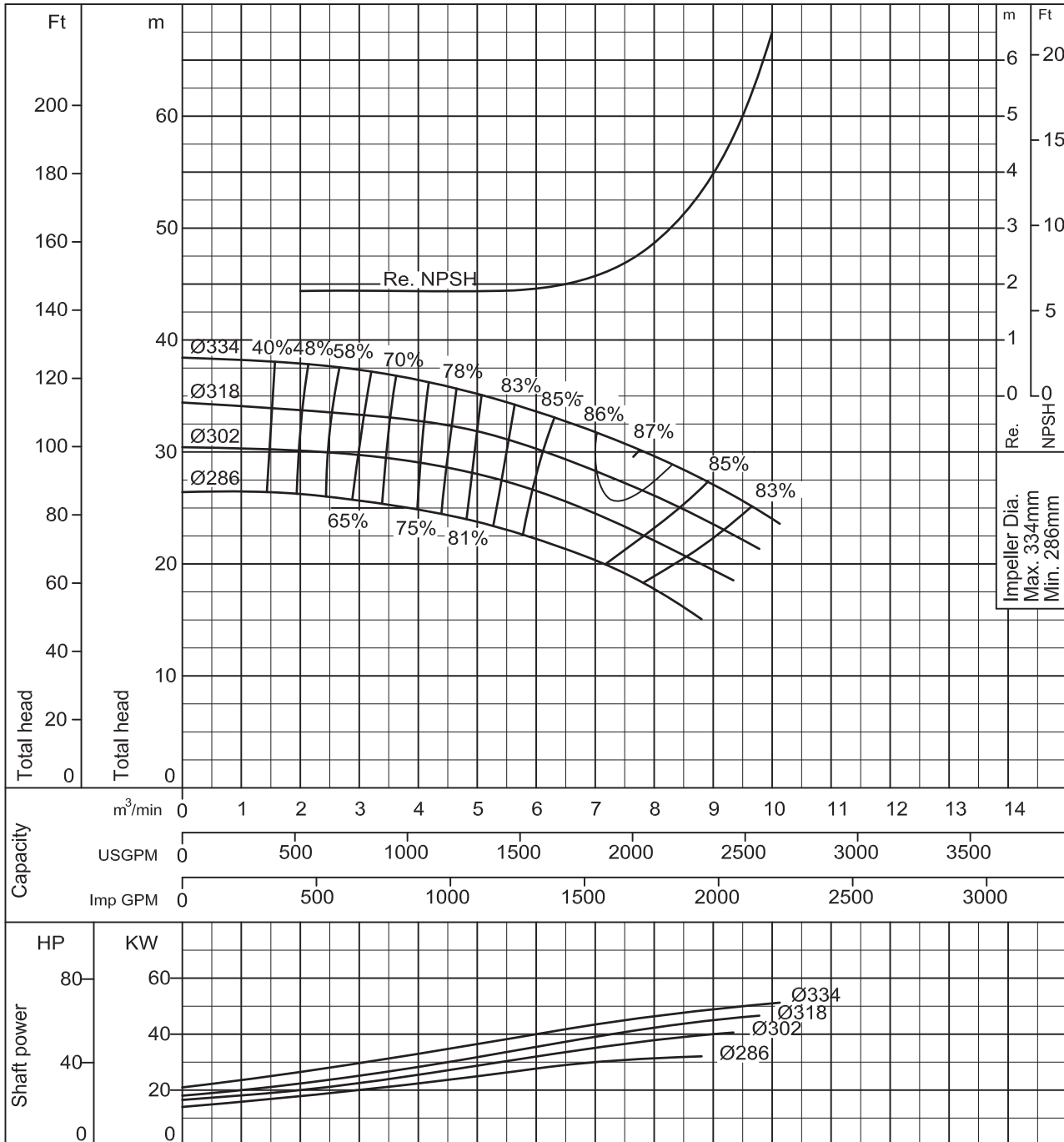
Vertical In-Line Centrifugal Pump

Model LPDA

Performance Curve

50 HZ

200 LPDKA	According to ISO testing code 2548 Class C
50Hz (Approx. speed 1450min ⁻¹)	S.G.= 1.0 Vis.= 1.0 cSt



Curve No. LPD-5415R0

**EBARA CORPORATION****EBARA CORPORATION (Head Office, Standard Pump Business Division), Japan**Website : www.ebara.co.jp/en**EBARA PUMPS EUROPE S.P.A. (Brendola office), Italy**Website : www.ebaraurope.comE-mail : marketing@ebaraurope.com**SUMOTO S.R.L., Italy**Website : www.sumoto.comE-mail : info@sumoto.com**EBARA ESPAÑA BOMBAS, S.A., Spain**Website : www.ebara.esE-mail : correo@ebara.es**EBARA INTERNATIONAL CORPORATION (Standard Pump Division), U.S.A.**Website : www.pumpsebara.comE-mail : sales@pumpsebara.com**EBARA INDÚSTRIAS MECÂNICAS E COMÉRCIO LTDA, Brazil**Website : www.ebara.com.br**EBARA MACHINERY (CHINA) CO., LTD, P.R.China**Website : www.ebara.cnE-mail : emc@ebara.cn**EBARA DENSAN-TAIWAN MANUFACTURING CO., LTD, R.O. China-Taiwan**Website : www.ebara.co.twE-mail : sales01@ebara.co.tw**EBARA (THAILAND) LIMITED, Thailand**Website : www.ebara.co.thE-mail : info@ebara.co.th**P.T. EBARA INDONESIA, Indonesia**Website : www.ebaraindonesia.comE-mail : marketing@ebaraindonesia.com**EBARA PUMPS MALAYSIA SDN. BHD., Malaysia**Website : www.ebara.com.myE-mail : sales@ebara.com.my**EBARA BENGUET, INC, Philippines**Website : www.ebaraphilippines.comE-mail : pumpsales@ebaraphilippines.com**EBARA ENGINEERING SINGAPORE PTE. LTD, Singapore**Website : www.ebara.com.sg**EBARA PUMPS AUSTRALIA PTY. LTD., Australia**Website : www.ebara.com.au

Distributor / Dealer