



### Applications

#### Water supply

Domestic house etc..  
Factory utility use, Wash-down etc.  
Small office

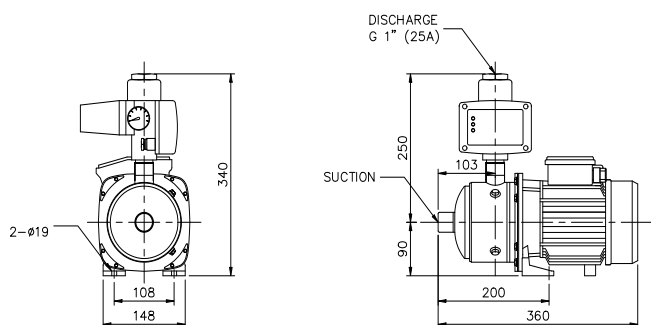
### Specifications

- Handling liquid 0-40 °C
- Installation Indoor
- Operation system Integrated controller control
- Supply water pressure Refer to pump performance
- Power supply Single phase 220V 50Hz
- Allowable suction pressure -0.3-+0.3 bar G

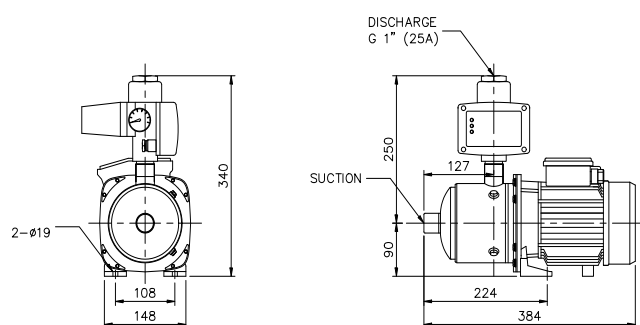
### Features

- Operated by integrated mechanical & electrical controller
- Compact size
- No fluctuated supply pressure at the same flow rate
- Clean water supply with no rust material (Pump in stainless steel)
- Quiet operation
- Auto display of pump operation condition

### Dimensions



DBU1 Matrix 3-3T/0.65M  
DBU1 Matrix 5-3T/0.65M

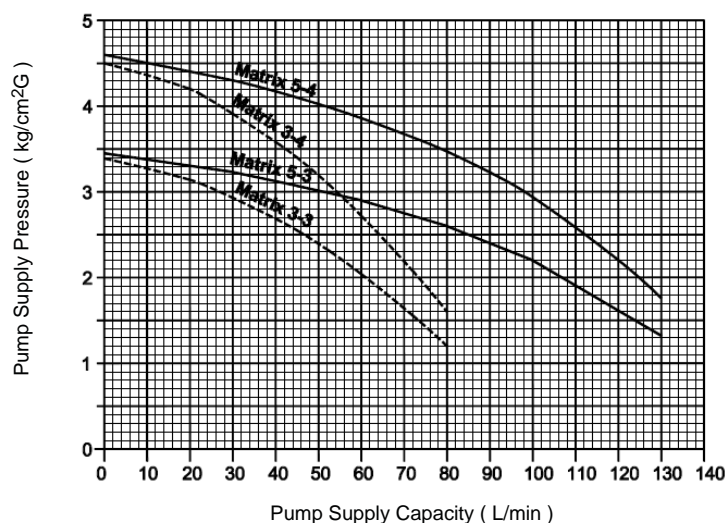


DBU1 Matrix 3-4T/0.65M  
DBU1 Matrix 5-4T/0.9M

Suction connection : G1" for Matrix 3-3 and 3-4  
G1-1/4" for Matrix 5-3 and 5-4

### Performance

Pump Performance Chart DBU 1



Performance table

Model	kW	Pump Supply Capacity (L/min)						
		20	30	45	60	80	100	130
		Pump Supply Pressure (kg/cm <sup>2</sup> G)						
DBU1 MATRIX 3-3/0.65M	0.65	3.1	2.9	2.5	2.0	1.2	-	-
DBU1 MATRIX 3-4/0.65M	0.65	4.2	3.9	3.4	2.7	1.6	-	-
DBU1 MATRIX 5-3/0.65M	0.65	-	3.2	3.0	2.9	2.6	2.2	1.3
DBU1 MATRIX 5-4/0.9M	0.9	-	4.3	4.1	3.8	3.4	2.9	1.7